

Analysis of referrals to first treatment pathways using
2017-2018 Cancer Waiting Times (CWT) data for colorectal,
lung and prostate cancers

Peninsula, by Trust

Produced by the Cancer Alliance Data, Evidence and Analysis Service (CADEAS)

13 November, 2018



Public Health
England

NHS
England

Contents

- ▶ Background
- ▶ Methodology
- ▶ Summary of key findings
- ▶ Count of patients with a CWT record included in the analysis, by Trust and cancer type

The following graphs are presented for colorectal, lung and prostate cancers separately:

- ▶ Variation in days from a CWT referral to first treatment received, by referral route
- ▶ ALL REFERRALS
 - ▶ Variation in days from a CWT referral to first treatment received, by Trust
 - ▶ Variation in days from a CWT referral to first MDT, by Trust
 - ▶ Variation in first treatment modality received, by Trust
 - ▶ Variation in days from a CWT referral to first treatment received, by the three most common treatment modalities
 - ▶ Variation in days from a CWT referral to first treatment received, by Trust for the three most common treatment modalities
- ▶ 62-DAY REFERRALS ONLY
 - ▶ Variation in days from a CWT referral to first treatment received, by Trust
 - ▶ Variation in days from a CWT referral to first MDT, by Trust
 - ▶ Variation in first treatment modality received, by Trust
 - ▶ Variation in days from a CWT referral to first treatment received, by the three most common treatment modalities
 - ▶ Variation in days from a CWT referral to first treatment received, by Trust for the three most common treatment modalities

Background

Aims: to provide Cancer Alliances with analysis of pathways with a Cancer Waiting Times (CWT) record for colorectal, lung and prostate cancers. This is to enable Alliances to support:

- ▶ implementation of the best practice times pathways; and
- ▶ meeting 62-day CWT operational standards.

The work is also aimed at helping Cancer Alliances understand where variations are occurring across trusts within their Cancer Alliance, as well as understanding pathway variation between tumour sites and referral routes (i.e. two week-wait (TWW) referrals and those covered by the 31-day operational standard).

Cancer Alliances are encouraged to use the analysis to identify best practice and to investigate significant variations where appropriate.

This work is produced by the Cancer Alliance Data, Evidence and Analysis Service (CADEAS), a partnership between NHS England and Public Health England. It builds on work previously carried out by RM Partners for the three Cancer Vanguard sites.

Methodology

This analysis uses all CWT dataset records from referral to first treatment for Peninsula for the 2017/18 financial year for colorectal, lung and prostate cancers¹. Patients with a CWT record account for approximately 80% of those diagnosed with cancer. The remaining 20% of patients with missing CWT records could be explained by several mechanisms. For example, CWT does not include data on patients who died before treatment could commence, even if the decision to treat had been made; and patients treated in the private sector are not captured in the CWT data collection².

Only records with a first treatment date recorded in 2017/18 are included.

The work is presented for colorectal (C18-C20), lung (C34) and prostate (C61) cancers segmented by:

- ▶ Trust
- ▶ CWT referral routes
- ▶ Days from CWT referral to first treatment
- ▶ Days from CWT referral to first MDT
- ▶ Days from CWT referral to first treatment by first treatment modality (three most common treatments for each tumour site)

¹This includes % of patients on TWW pathway (urgent GP referrals) and % on 31 day pathways only

²Further issues are discussed in this paper: <https://www.nature.com/articles/bjc2017452>

Methodology (cont.)

Two cancer waiting times adjustments have been included in the time taken from referral to first treatment calculations, in line with CWT official statistics. These are the waiting time adjustment (first seen) and waiting time adjustment (treatment)³.

Patients were assigned to this Cancer Alliance based on their first treatment trust record. For all patients in the England cohort, 100% had a recorded treatment trust and therefore could be assigned to a Cancer Alliance.

Please note that a small proportion of patients (0.32%) have multiple CWT records; this is due to patients being diagnosed with more than one tumour or having multiple CWT data submissions for the same tumour.

Caveats:

- ▶ This is operational data to be used for operational decision making and for this reason has not been casemix adjusted
- ▶ Caution should be taken when interpreting results with small numbers as difficult to draw reliable conclusions

³National Cancer Waiting Times Monitoring Dataset Guidance - Version 9.0 (pg.47)

Summary of key findings

A total of 3430 patients were included in the analysis for Peninsula for 2017/18 (% colorectal; % lung; and % prostate cancers). University Hospitals Plymouth NHS Trust had the highest number of cancer cases with a CWT record in 2017/18 (slide 7).

A significant proportion of MDT dates were missing in the CWT data submissions from trusts (slides 18-20). Improving the data completeness of MDT dates will help us to draw more meaningful conclusions regarding the time taken from CWT referral to first MDT. This will allow for better understanding of this part of the pathway ahead of the implementation of the faster diagnosis standard (FDS).

The three most common first treatment modalities received for colorectal cancers are surgery, palliative care only and chemotherapy; palliative care only, chemotherapy and surgery for lung cancer; and hormonal therapy, active monitoring and surgery for prostate cancers (slides 24-26, 30-32 and 36-38).

There is variation in days from a CWT referral to first treatment received across trusts even for the same tumour site, same referral route and same treatment type. This may be due to stage at diagnosis and patient characteristics. It is important to note that a shorter pathway may not always be associated with better outcomes. Further analysis will be carried out to examine variation by stage at diagnosis and patient characteristics using linked datasets.

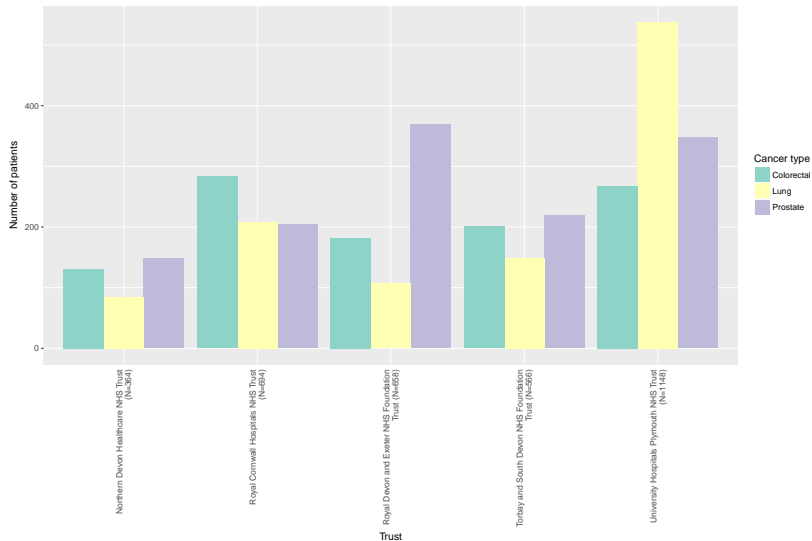
This is the first time CWT pathway data are published specifically for colorectal and prostate cancers.

Please see guidance document for more information.

CWT operational standards' definitions

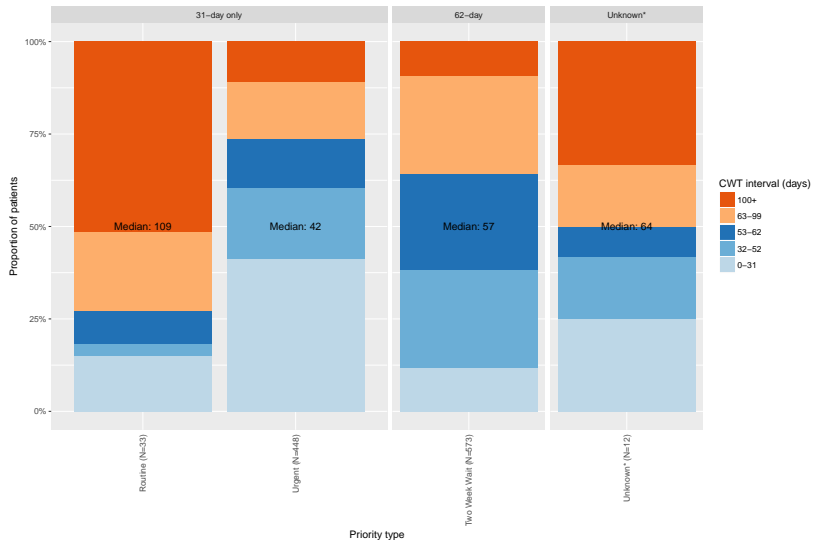
- ▶ **TWO WEEK WAIT (TWW) (93% target):** Patients seen by a specialist within 14 days of an urgent GP referral for suspected cancer (all patients on a TWW pathway will go on to a 62-day pathway if diagnosed with cancer)
- ▶ **31-DAY (96% target):** Patients receiving their first definitive treatment for cancer within 31 days of a cancer diagnosis
 - ▶ **Routine**
 - ▶ **Urgent:** clinically urgent but does not fall under criteria for TWW
- ▶ **62-DAY (85% target):** Patients beginning their first definitive treatment for cancer within 62 days following an urgent GP referral for suspected cancer
- ▶ **28-DAY FASTER DIAGNOSIS STANDARD (FDS):** A new cancer diagnosis standard designed to ensure that patients find out within 28 days whether or not they have cancer (to be introduced in 2020)

Count of patients with a CWT record included in the analysis, by Trust and cancer type (2017/18)



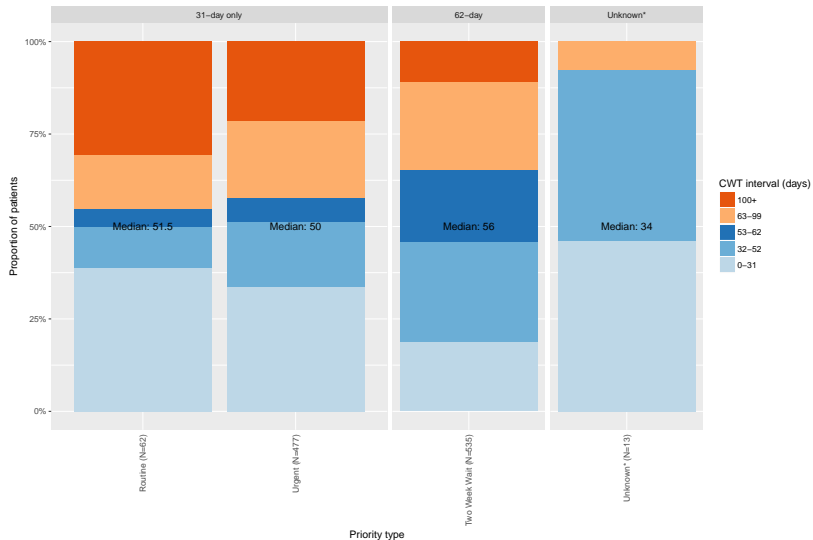
Variation in days by pathway referral route

Colorectal cancer: variation in days from a CWT referral to first treatment received, by referral route (2017/18)



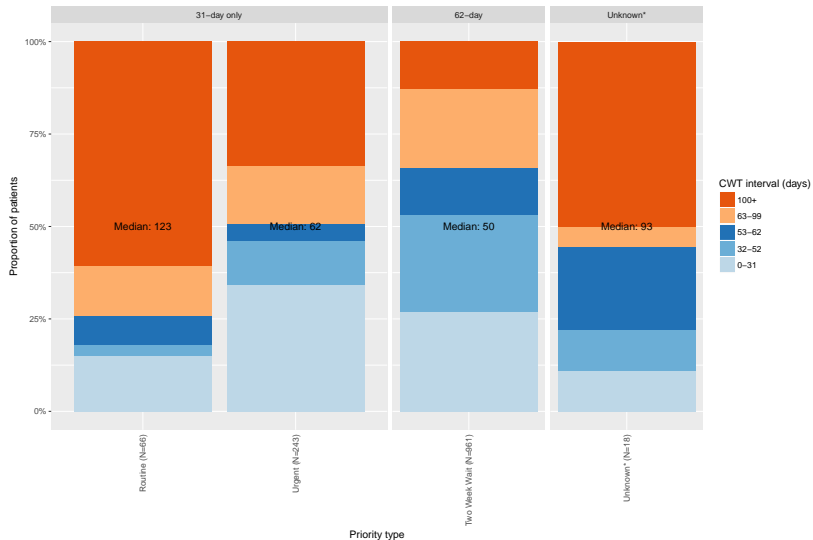
*Unknown = patient records with missing information on referral route

Lung cancer: variation in days from a CWT referral to first treatment received, by referral route (2017/18)



*Unknown = patient records with missing information on referral route

Prostate cancer: variation in days from a CWT referral to first treatment received, by referral route (2017/18)

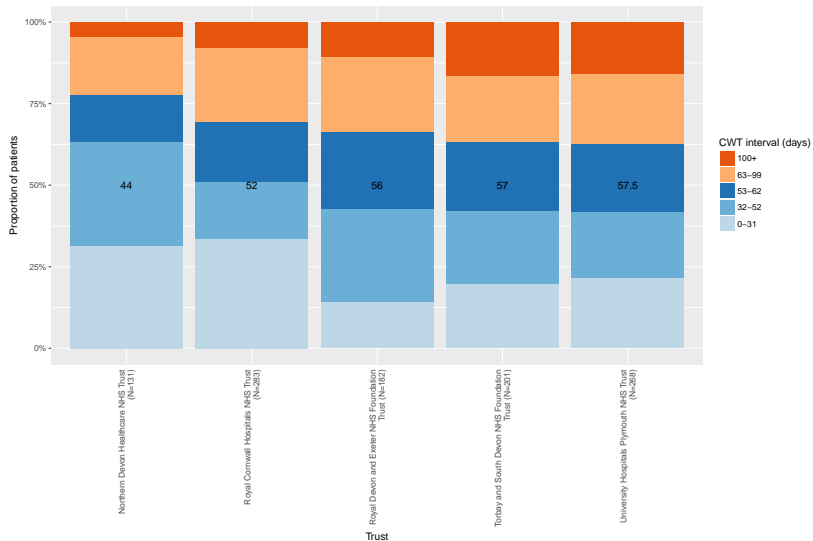


*Unknown = patient records with missing information on referral route

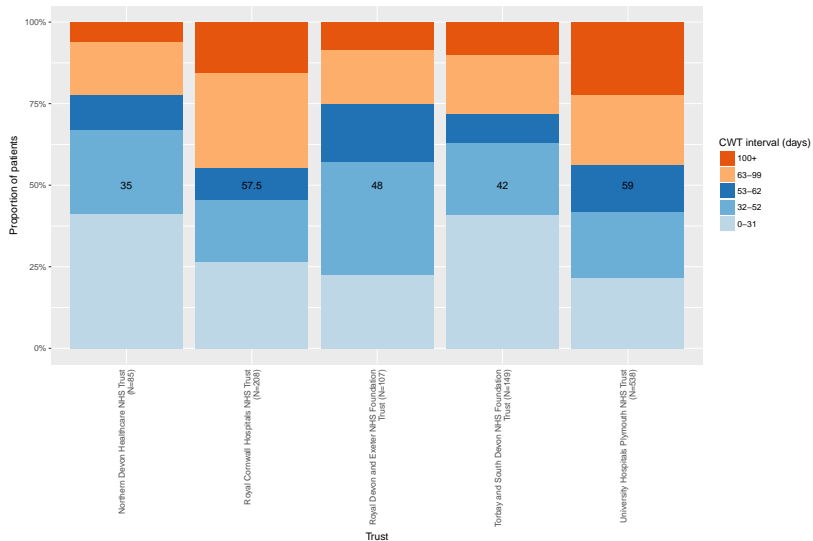
ALL REFERRAL ROUTES

Variation in days from a CWT referral to first treatment received

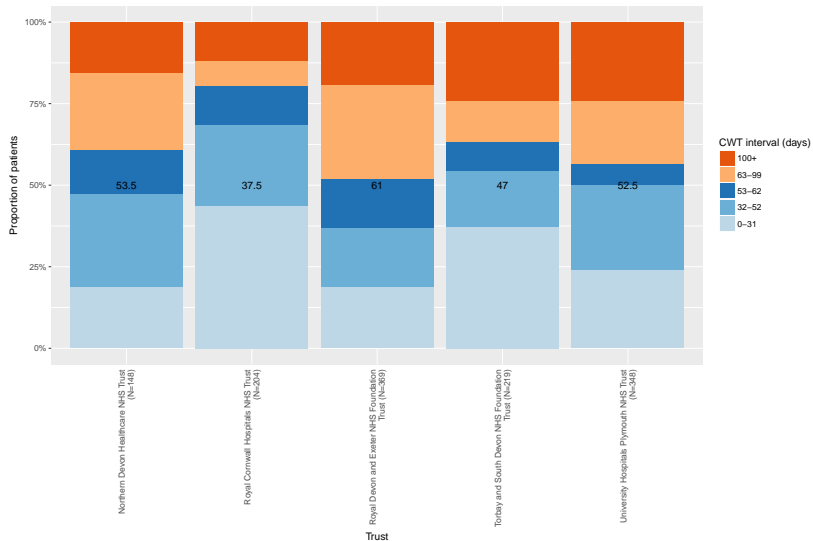
Colorectal cancer: variation in days from a CWT referral to first treatment received, by Trust (2017/18, all referrals)



Lung cancer: variation in days from a CWT referral to first treatment received, by Trust (2017/18, all referrals)

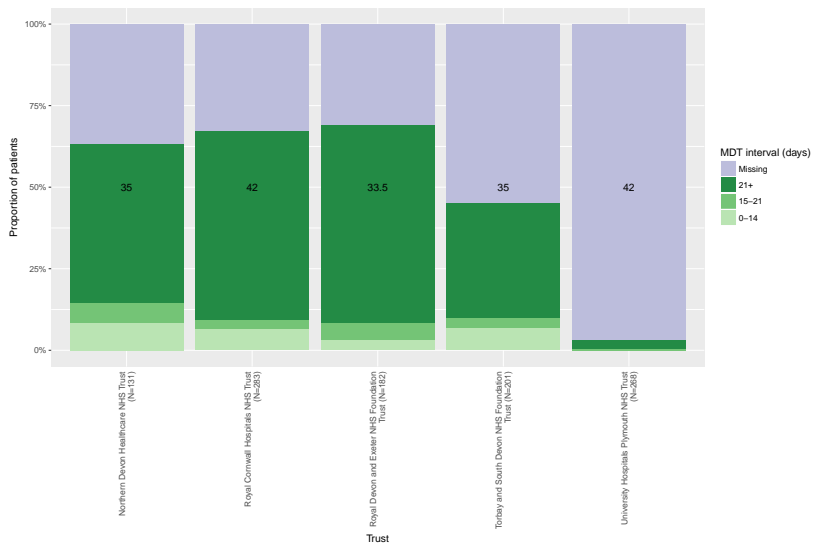


Prostate cancer: variation in days from a CWT referral to first treatment received, by Trust (2017/18, all referrals)

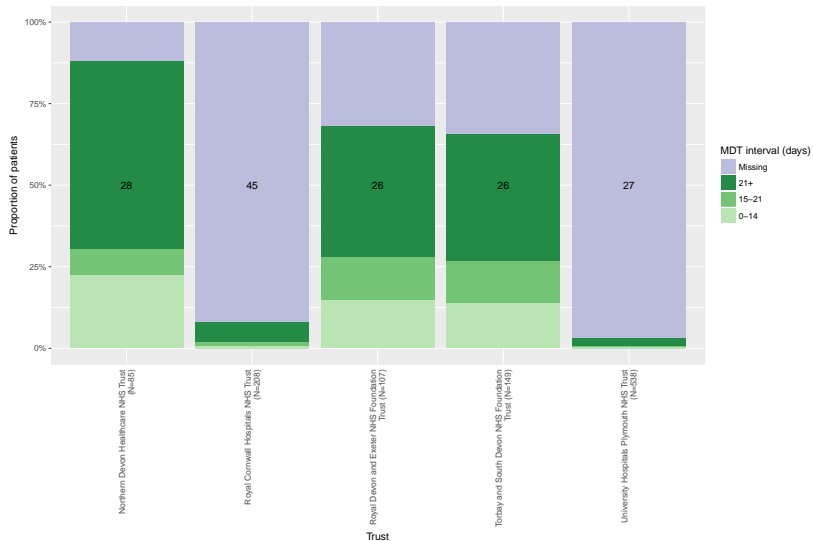


Variation in days from a CWT referral to first MDT

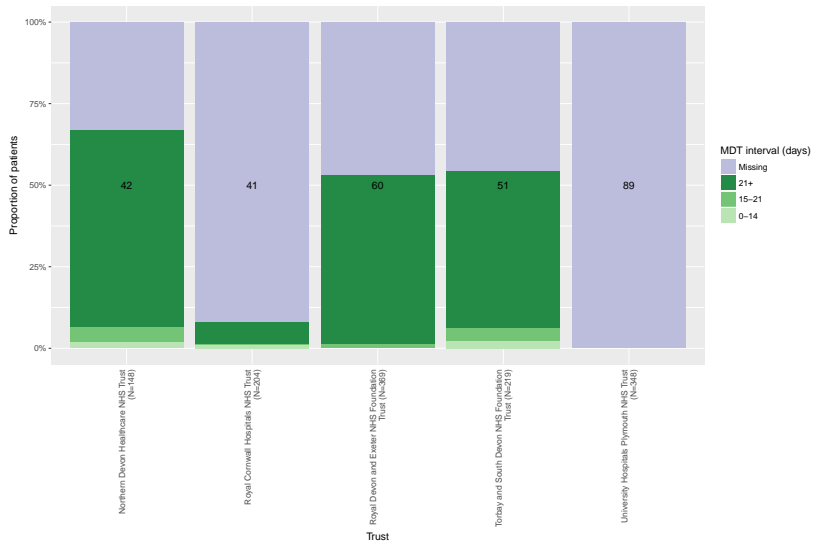
Colorectal cancer: variation in days from a CWT referral to first MDT, by Trust (2017/18, all referrals)



Lung cancer: variation in days from a CWT referral to first MDT, by Trust (2017/18, all referrals)

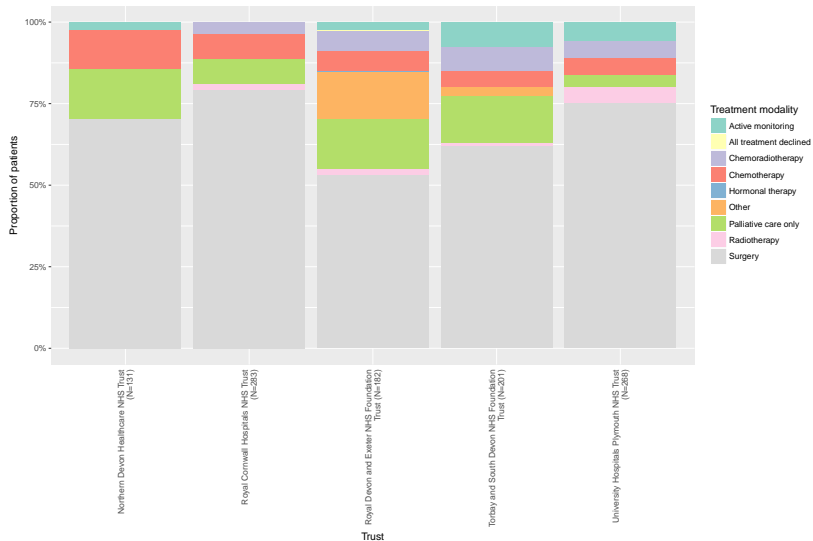


Prostate cancer: variation in days from a CWT referral to first MDT, by Trust (2017/18, all referrals)

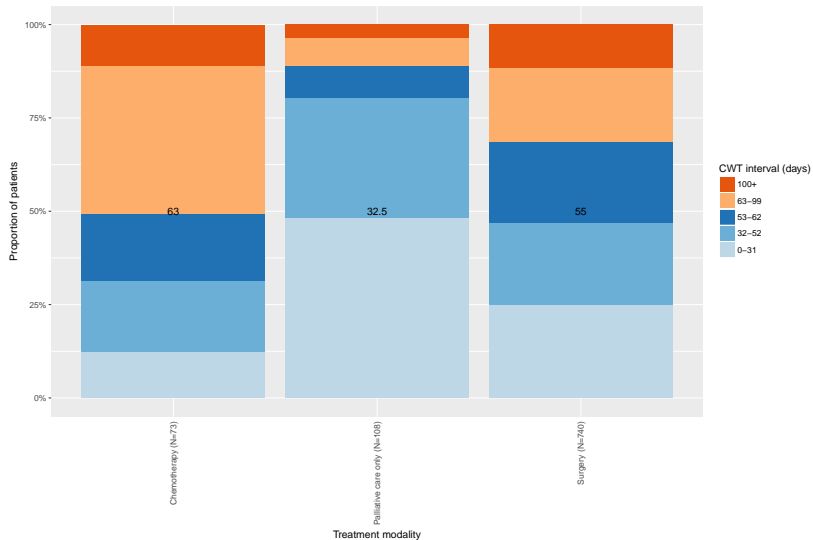


Analysis by first treatment modality: colorectal cancer

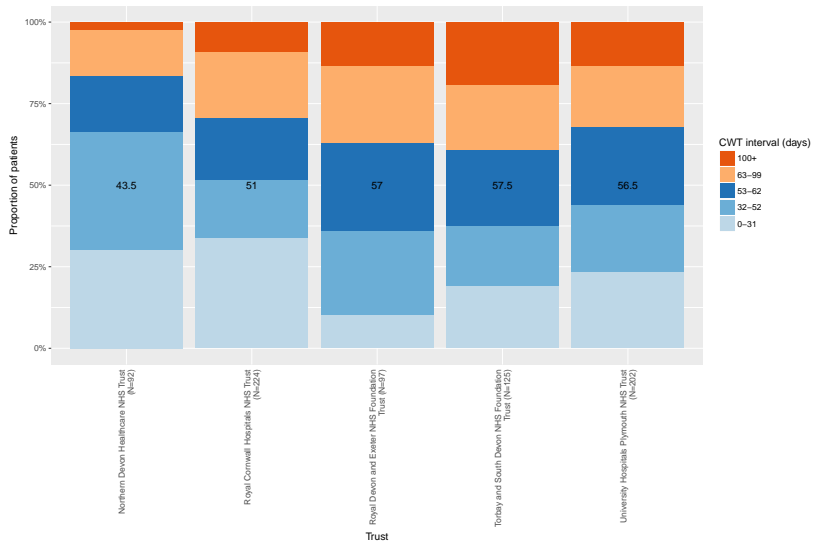
Colorectal cancer: variation in first treatment modality received, by Trust (2017/18, all referrals)



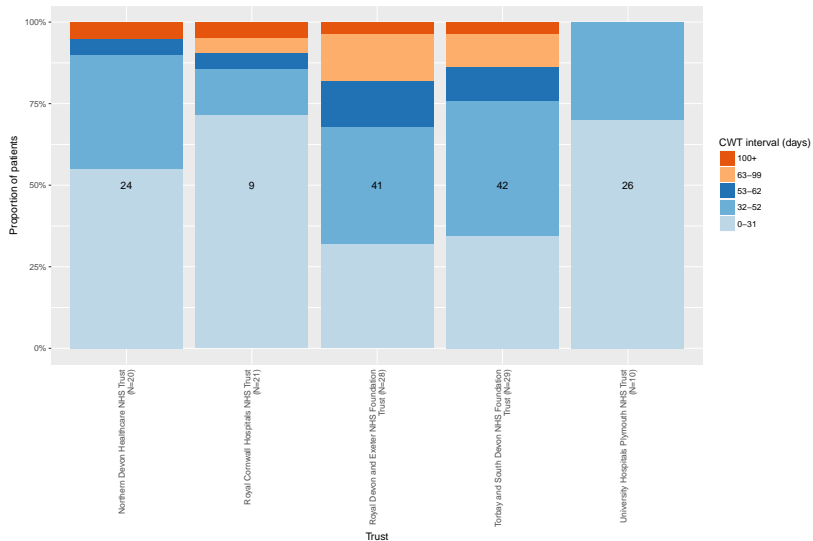
Colorectal cancer: variation in days from a CWT referral to first treatment received, by the three most common treatment modalities (2017/18, all referrals)



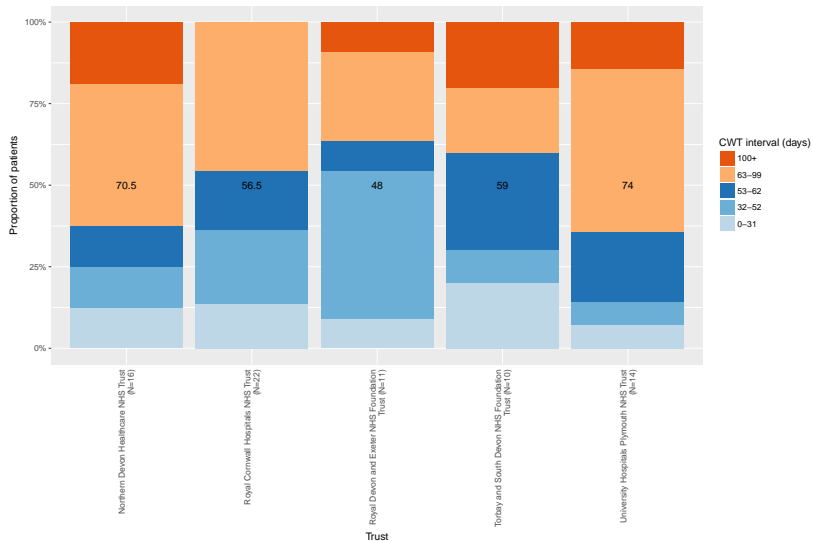
Colorectal cancer and surgery: variation in days from a CWT referral to first treatment received, by Trust (2017/18, all referrals)



Colorectal cancer and palliative care only: variation in days from a CWT referral to first treatment received, by Trust (2017/18, all referrals)

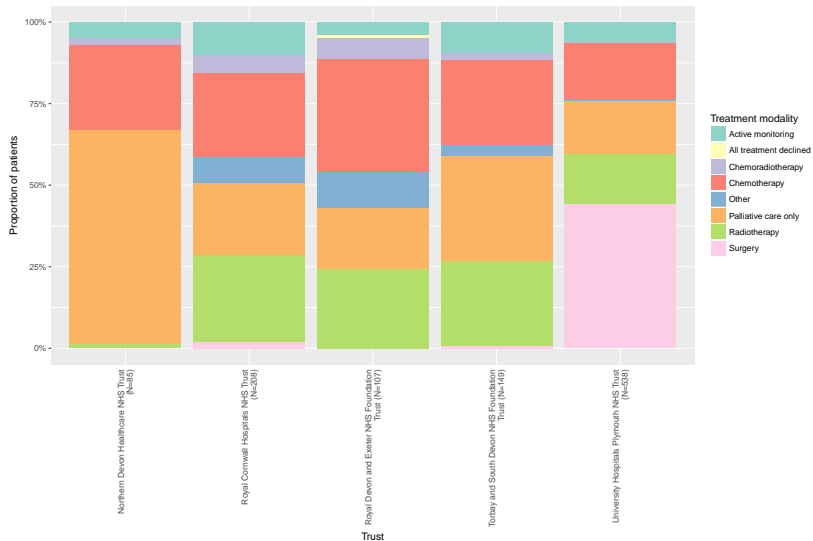


Colorectal cancer and chemotherapy: variation in days from a CWT referral to first treatment received, by Trust (2017/18, all referrals)

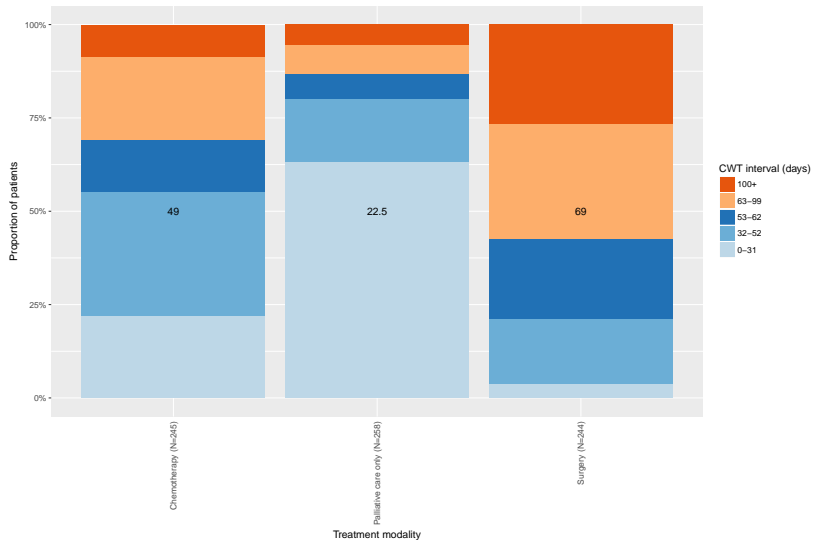


Analysis by first treatment modality: lung cancer

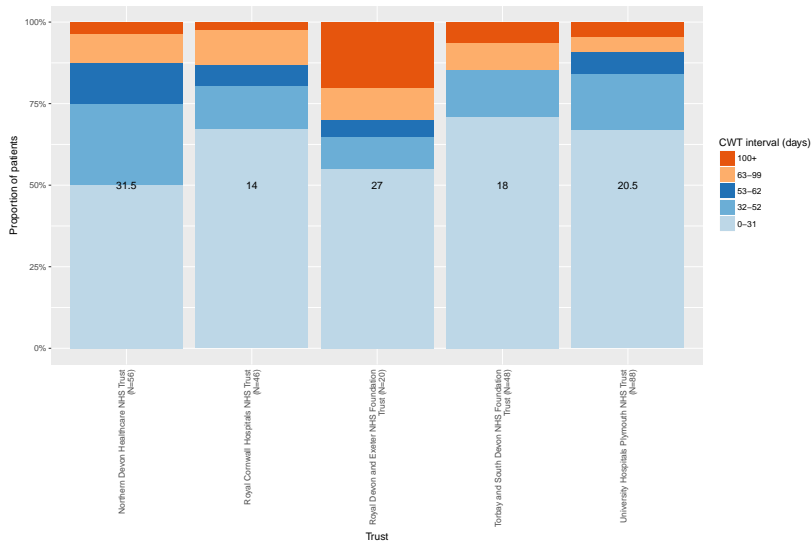
Lung cancer: variation in first treatment modality received, by Trust (2017/18, all referrals)



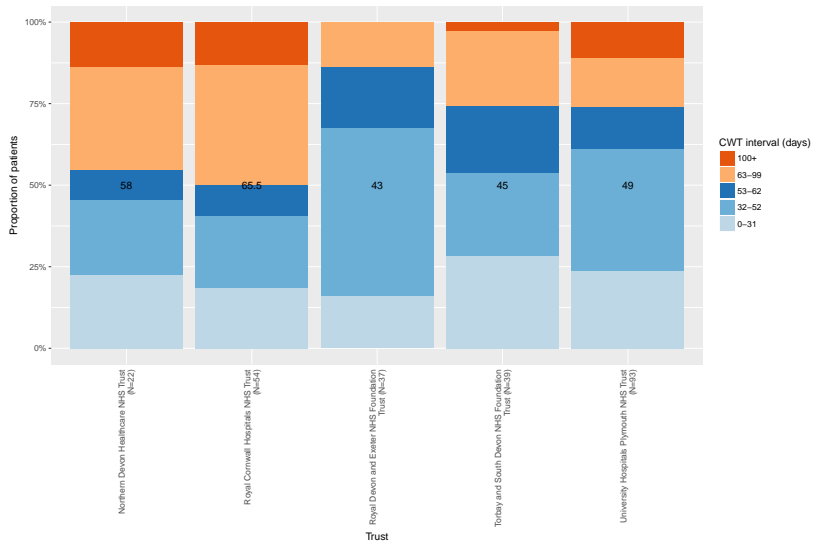
Lung cancer: variation in days from a CWT referral to first treatment received, by the three most common treatment modalities (2017/18, all referrals)



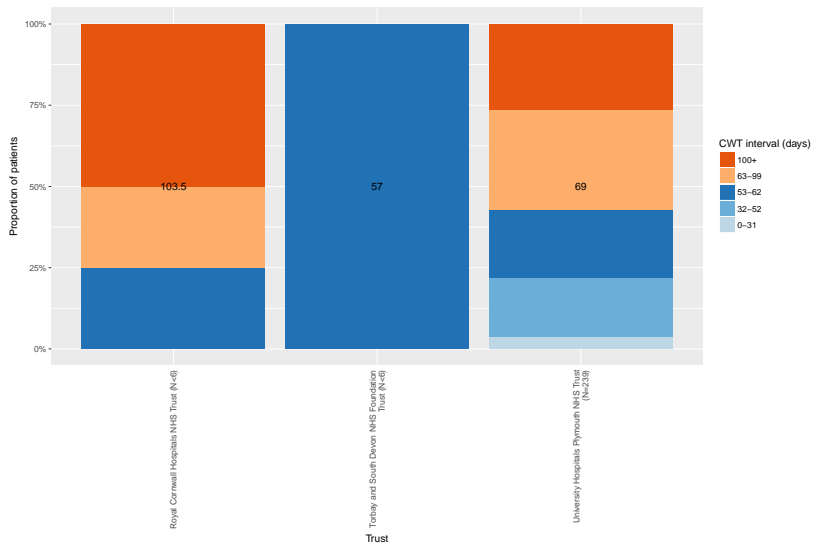
Lung cancer and palliative care only: variation in days from a CWT referral to first treatment received, by Trust (2017/18, all referrals)



Lung cancer and chemotherapy: variation in days from a CWT referral to first treatment received, by Trust (2017/18, all referrals)



Lung cancer and surgery: variation in days from a CWT referral to first treatment received, by Trust (2017/18, all referrals)

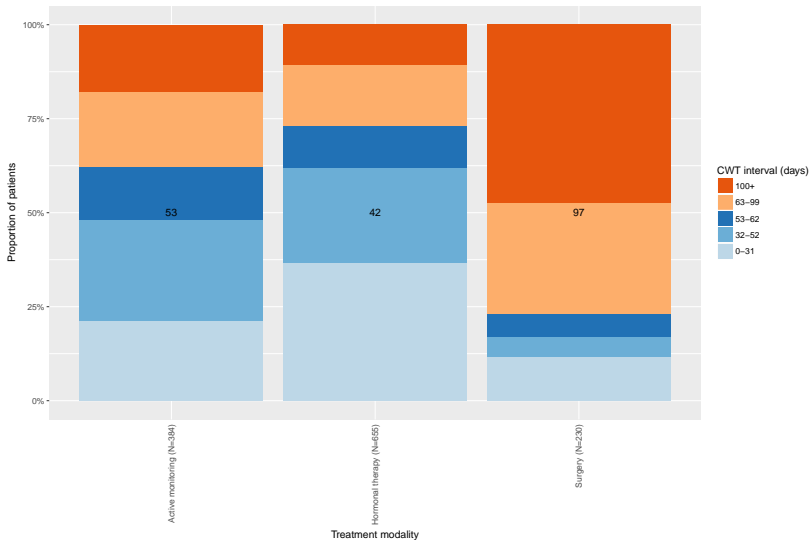


Analysis by first treatment modality: prostate cancer

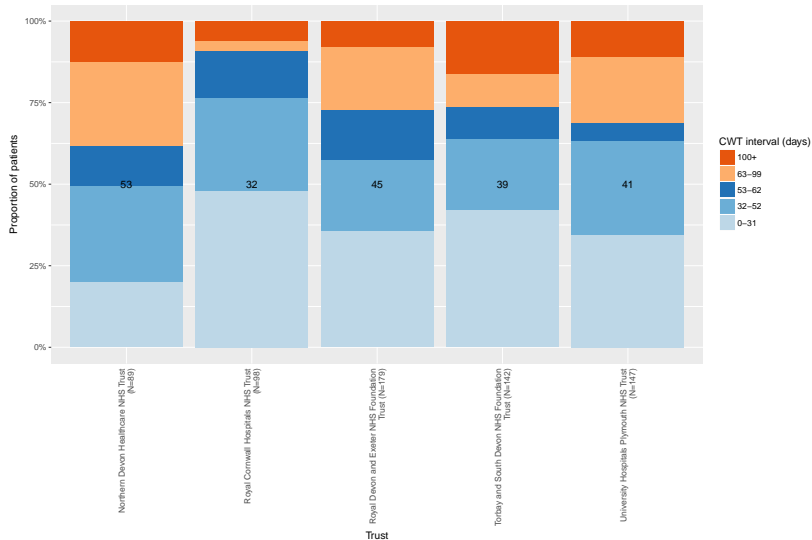
Prostate cancer: variation in first treatment modality received, by Trust (2017/18, all referrals)



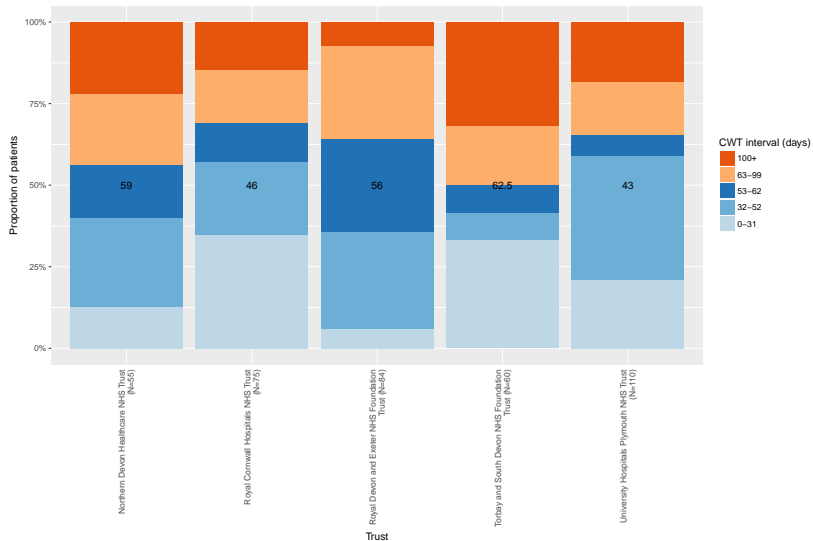
Prostate cancer: variation in days from a CWT referral to first treatment received, by the three most common treatment modalities (2017/18, all referrals)



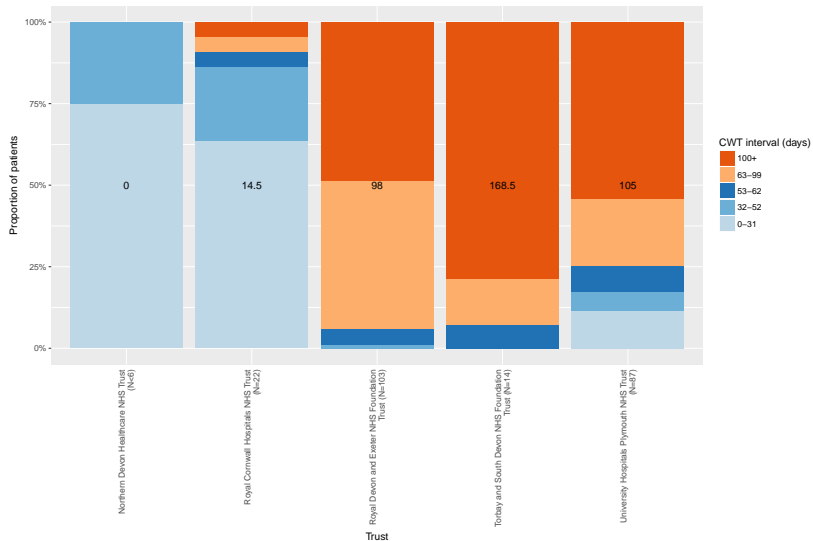
Prostate cancer and hormonal therapy: variation in days from a CWT referral to first treatment received, by Trust (2017/18, all referrals)



Prostate cancer and active monitoring: variation in days from a CWT referral to first treatment received, by Trust (2017/18, all referrals)



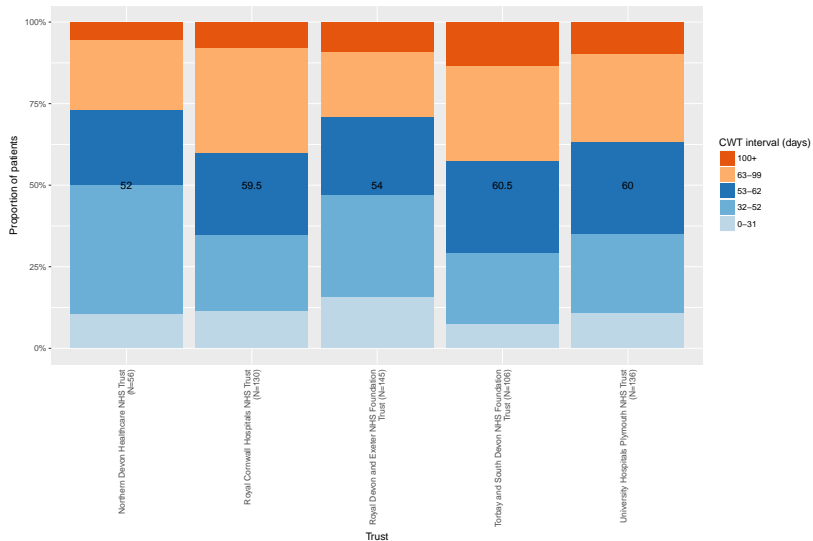
Prostate cancer and surgery: variation in days from a CWT referral to first treatment received, by Trust (2017/18, all referrals)



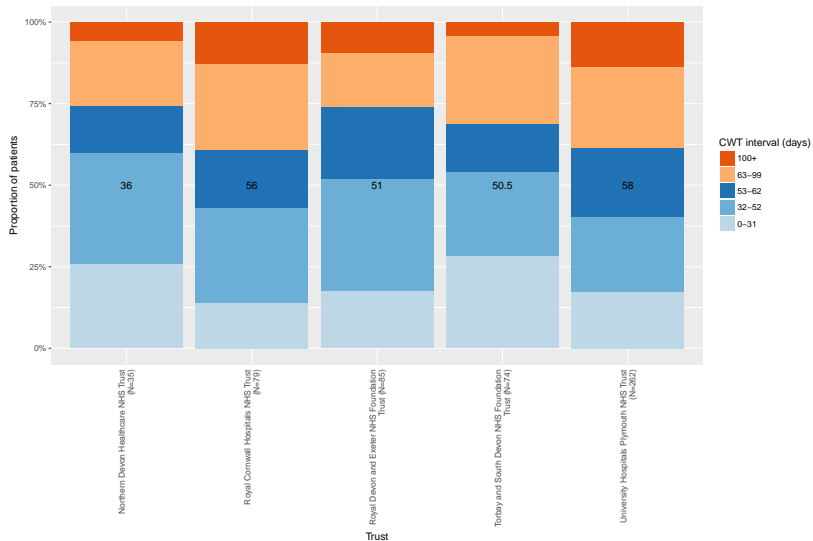
62-DAY REFERRALS ONLY

Variation in days from a CWT referral to first treatment received

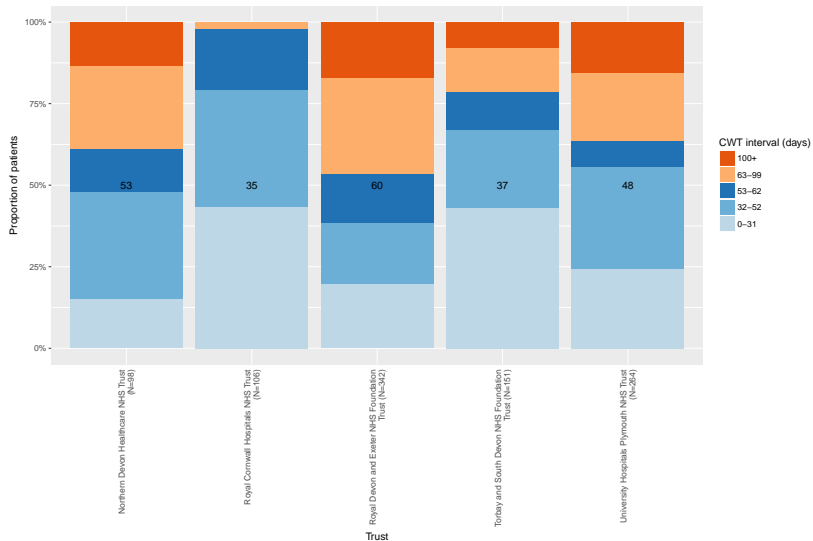
Colorectal cancer: variation in days from a CWT referral to first treatment received, by Trust (2017/18, 62-day referrals only)



Lung cancer: variation in days from a CWT referral to first treatment received, by Trust (2017/18, 62-day referrals only)

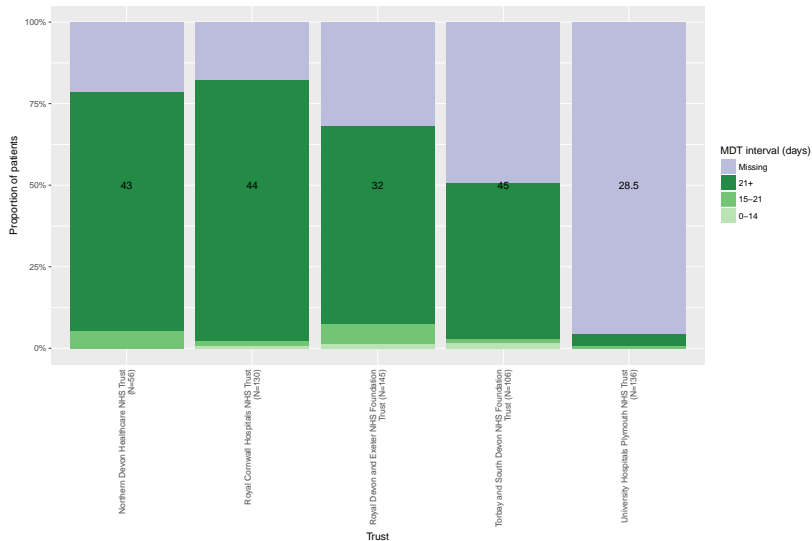


Prostate cancer: variation in days from a CWT referral to first treatment received, by Trust (2017/18, 62-day referrals only)

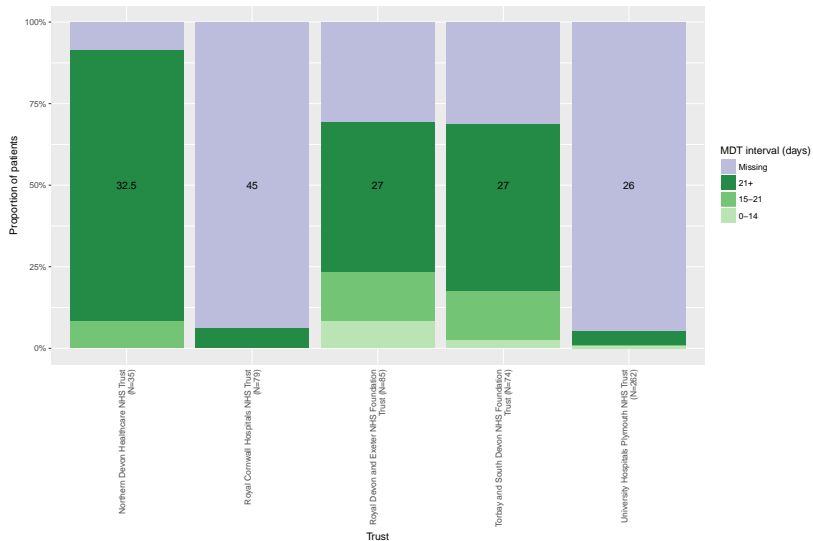


Variation in days from a CWT referral to first MDT

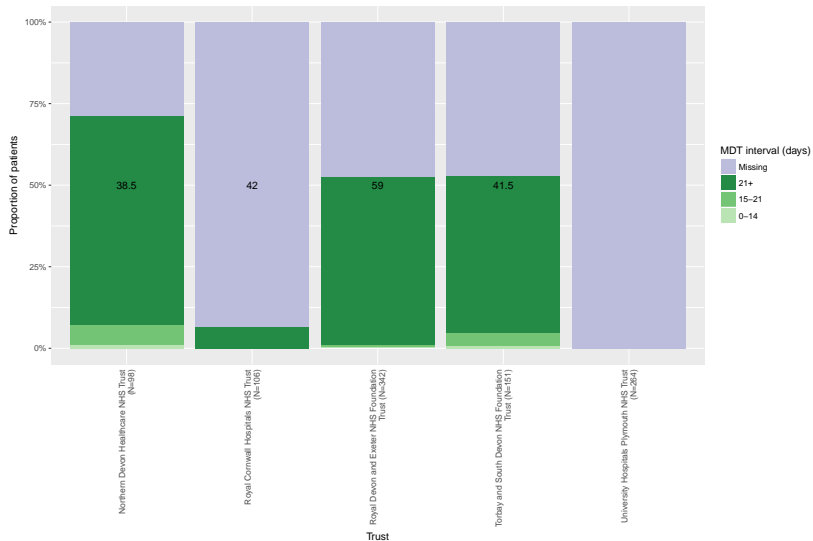
Colorectal cancer: variation in days from a CWT referral to first MDT, by Trust (2017/18, 62-day referrals only)



Lung cancer: variation in days from a CWT referral to first MDT, by Trust (2017/18, 62-day referrals only)

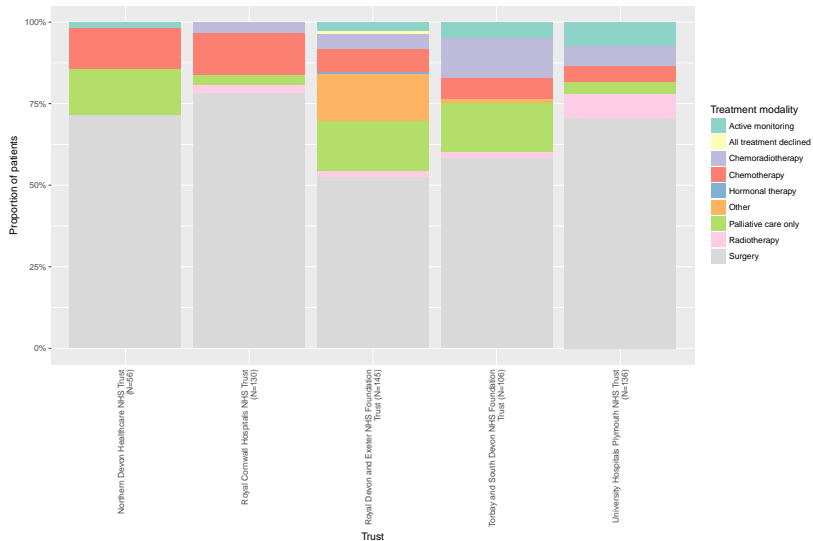


Prostate cancer: variation in days from a CWT referral to first MDT, by Trust (2017/18, 62-day referrals only)

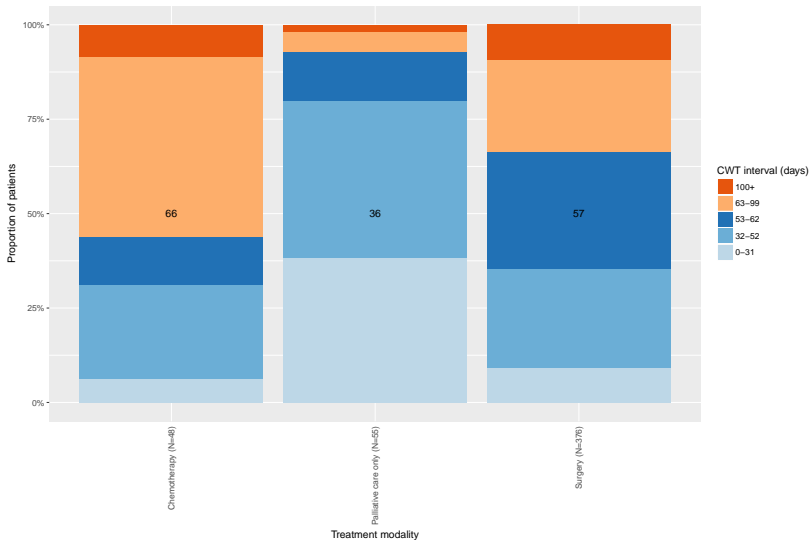


Analysis by first treatment modality: colorectal cancer

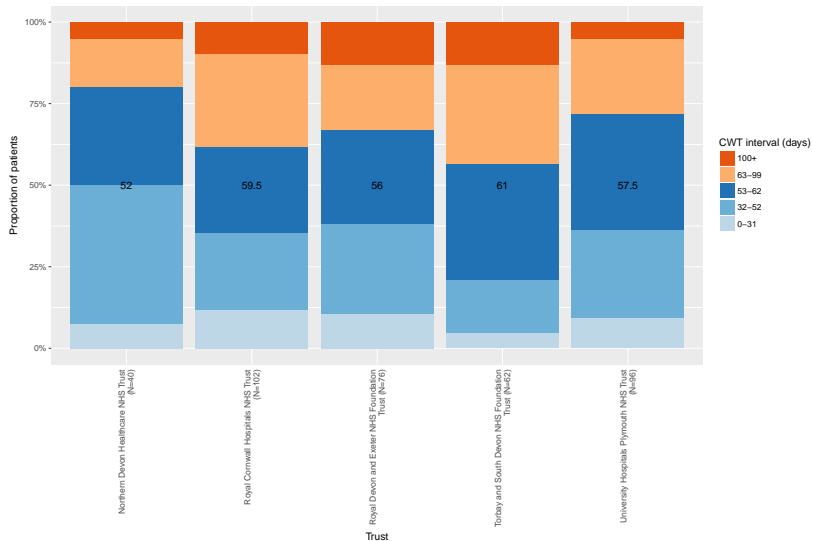
Colorectal cancer: variation in first treatment modality received, by Trust (2017/18, 62-day referrals only)



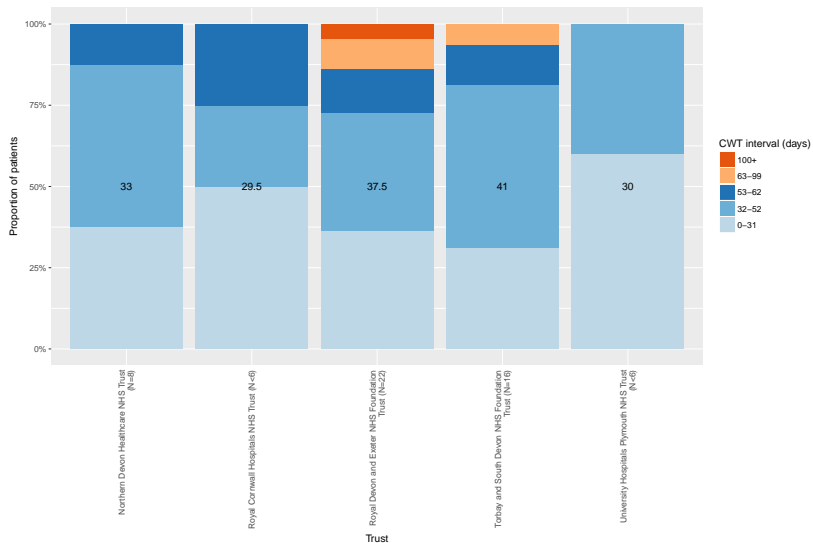
Colorectal cancer: variation in days from a CWT referral to first treatment received, by the three most common treatment modalities (2017/18, 62-day referrals only)



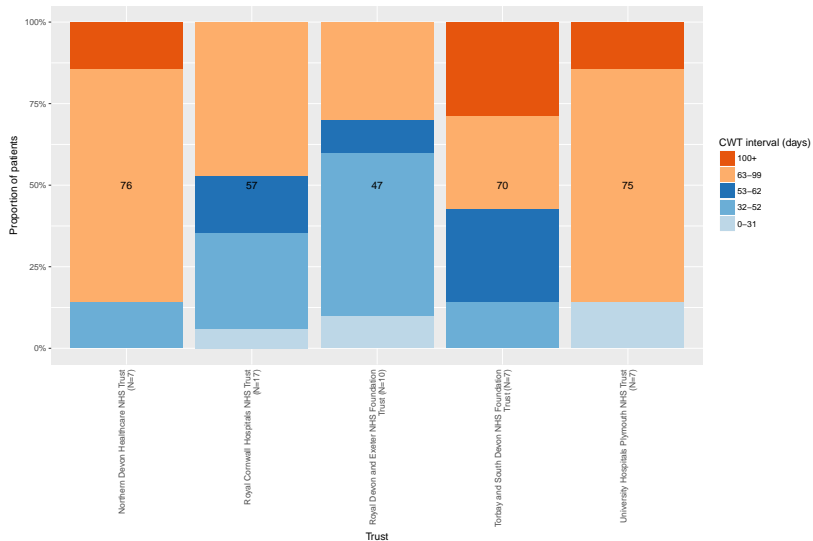
Colorectal cancer and surgery: variation in days from a CWT referral to first treatment received, by Trust (2017/18, 62-day referrals only)



Colorectal cancer and palliative care only: variation in days from a CWT referral to first treatment received, by Trust (2017/18, 62-day referrals only)



Colorectal cancer and chemotherapy: variation in days from a CWT referral to first treatment received, by Trust (2017/18, 62-day referrals only)

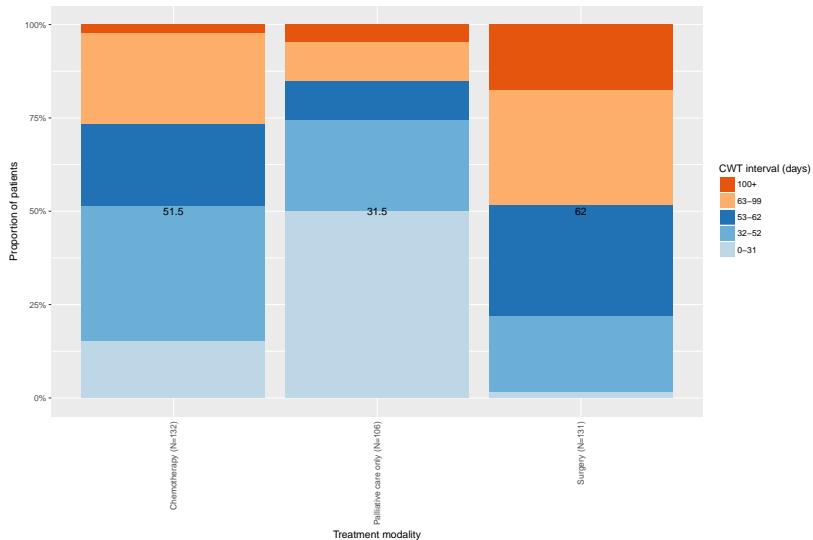


Analysis by first treatment modality: lung cancer

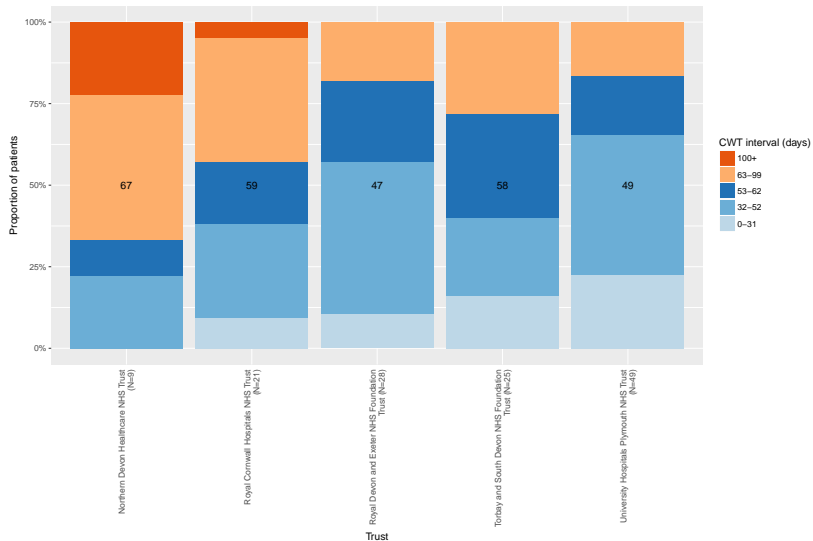
Lung cancer: variation in first treatment modality received, by Trust (2017/18, 62-day referrals only)



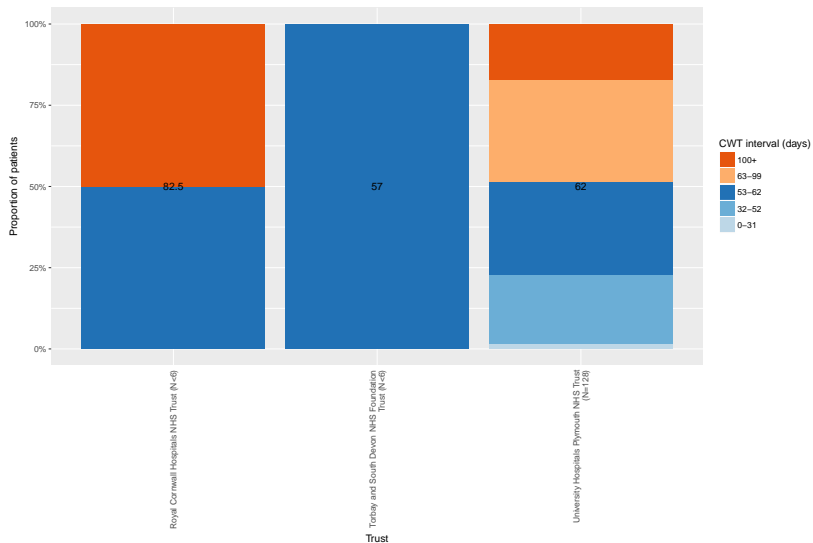
Lung cancer: variation in days from a CWT referral to first treatment received, by the three most common treatment modalities (2017/18, 62-day referrals only)



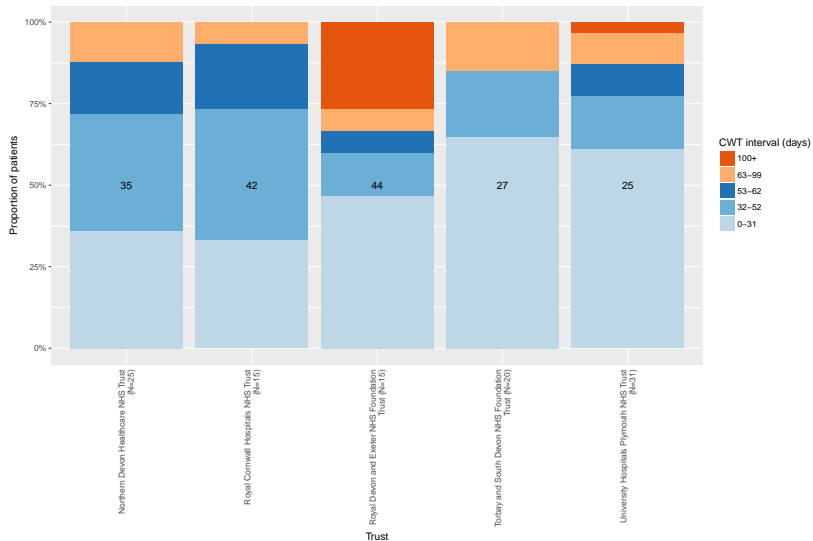
Lung cancer and chemotherapy: variation in days from a CWT referral to first treatment received, by Trust (2017/18, 62-day referrals only)



Lung cancer and surgery: variation in days from a CWT referral to first treatment received, by Trust (2017/18, 62-day referrals only)

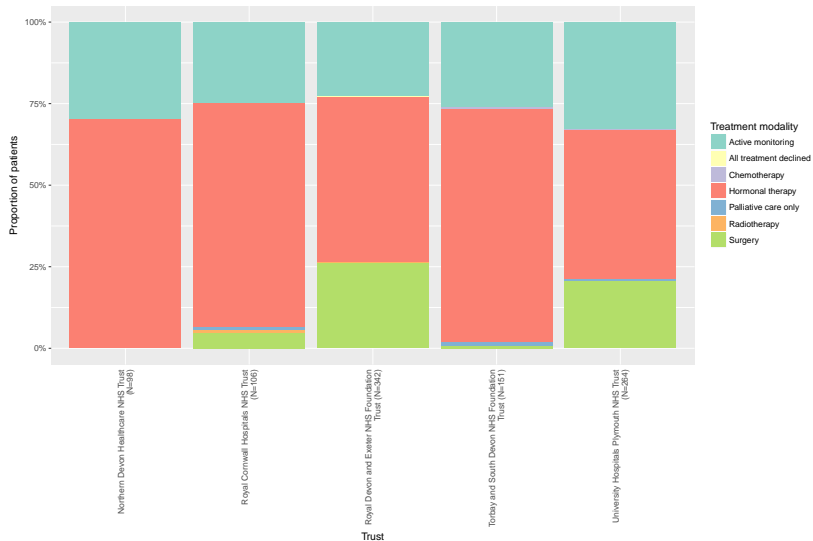


Lung cancer and palliative care only: variation in days from a CWT referral to first treatment received, by Trust (2017/18, 62-day referrals only)

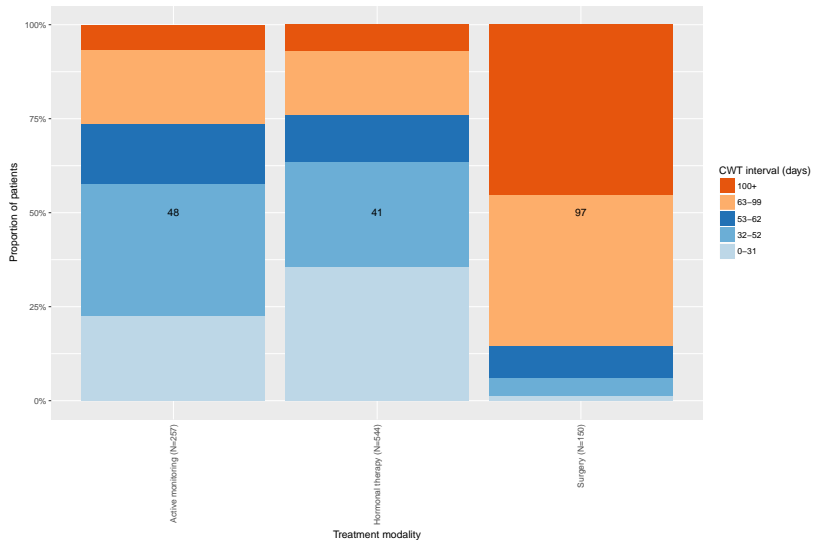


Analysis by first treatment modality: prostate cancer

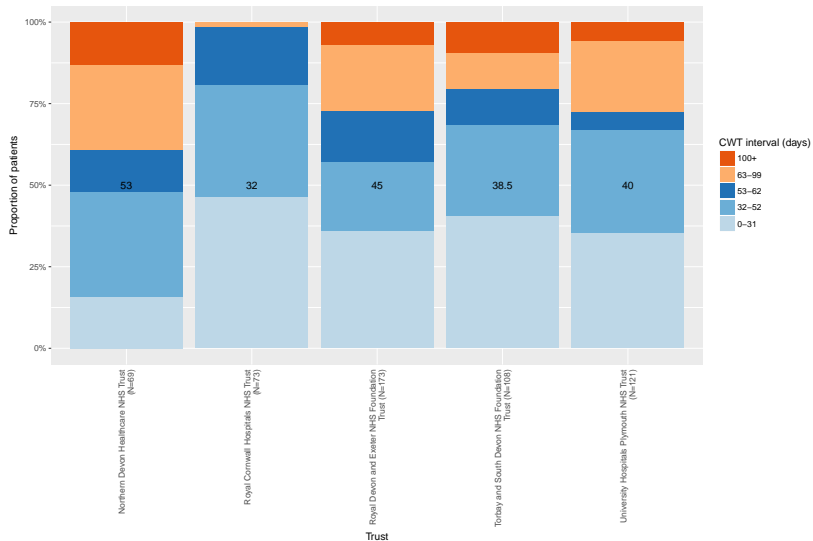
Prostate cancer: variation in first treatment modality received, by Trust (2017/18, 62-day referrals only)



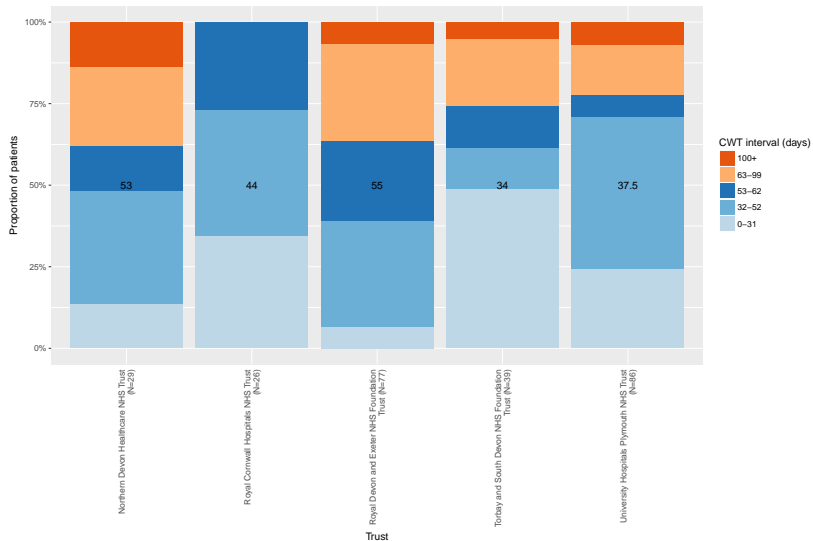
Prostate cancer: variation in days from a CWT referral to first treatment received, by the three most common treatment modalities (2017/18, 62-day referrals only)



Prostate cancer and hormonal therapy: variation in days from a CWT referral to first treatment received, by Trust (2017/18, 62-day referrals only)



Prostate cancer and active monitoring: variation in days from a CWT referral to first treatment received, by Trust (2017/18, 62-day referrals only)



Prostate cancer and surgery: variation in days from a CWT referral to first treatment received, by Trust (2017/18, 62-day referrals only)

