

# Peninsula Performance Summary

October Board (04/10/21)

**Please note:** These slides contain sensitive, unpublished and unvalidated information for management purposes only. The slides also contain lower tumour site breakdowns (and therefore reflect smaller numbers) than are available in the public domain. Please do not share outside of the South West NHS.

**Data caveat:** CWT Data from April to July 2021 is provisional and subject to change, with known data quality issues for several trusts in May 2021 and one trust in July 2021.

# Headlines (1)

## H1 Planning trajectories vs. actual figures (CCG level)

- Referrals (April to July 21): In Cornwall, the no. of patients seen was generally similar to or above planning trajectories, and in Devon (with the exception of May 2021 (where there are known data quality issues), no. of patients seen was higher than planning trajectories.
- Treatment (April to July 21): For both CCGs, actual treatment volumes were consistently lower than planning trajectories.
- Backlog (June to August 21): For both CCGs, 62+ day backlog has been consistently higher than planning trajectories.

## Recovery: Treatment volumes vs. 'usual levels'

- Treatment volumes compared to 'usual levels' (i.e. comparative months in 2019/20 working day adjusted but does not account for treatment shortfall due to Covid or expected yearly growth) have fluctuated for several trusts but have been consistently notably lower at RD&E. As of July 2021, Northern Devon was at 85.0%, Royal Cornwall at 93.5%, RD&E at 66.7%, Torbay & South Devon at 104.5% and Plymouth at 85.6%.

## CWT performance

### 2WW urgent suspected breast cancer + breast symptomatic combined performance

- Peninsula's performance declined from Feb to April 2021 but has since improved. As of July 2021, performance was 66.8% (notably below the England average, 79.3% and the individual 93% standards). Consistently very low performance at Northern Devon, 7.5% as of July 2021.

### 2WW overall urgent suspected cancer performance

- Since Feb 21, Peninsula's performance has been consistently below the 93% standard and England average (ranging between 75.3% and 86.2%). RD&E was generally the lowest performing trust in the alliance (excluding Torbay & South Devon which is part of the 2WW pilot, though had the lowest performance in July for example). As of July 2021, performance improved at RD&E (76.5%) but remained notably lower than both the standard and England average (85.6%)
- Suspected tumour site level (July 21): Overall provider level performance within Peninsula was lowest for breast (69.5%) followed by lower GI (76.6%) and other (78.9%). RD&E and Torbay & South Devon (part of 2WW pilot) had notably low performance for a number of tumour sites.

### 31-day wait performance – 2<sup>nd</sup> or subsequent treatment (SURGERY ONLY)

- Since Feb 21, Peninsula performance overall has been below 94% and performance at the trusts has fluctuated, with no trust consistently meeting the 94% standard. RD&E and Plymouth have been consistently below the standard.

### 62-day wait performance – urgent GP referral to treatment

- Since Feb 21, Peninsula's performance (driven predominantly by Plymouth, Torbay & South Devon and RD&E) has been consistently below the 85% standard. In July 21, performance was below the England average (72.1%) at Plymouth (70.6%), Torbay & South Devon (67.8%) and RD&E (64.0%). Royal Cornwall has consistently exceeded the 85% standard.
- Tumour sites where the majority or all trusts were below the PCA standard included urological, lower GI, upper GI and breast. Overall performance <50% for urological & lower GI.

# Headlines (2)

## FDS

### Data completeness (total urgent suspected cancer + breast symptomatic):

- From May to July 2021, Plymouth and RD&E on average had over 90% estimated data completeness, whilst Royal Cornwall and Northern Devon were below 90% (89.4% and 87.2%, respectively).
- Torbay and South Devon did not submit FDS data for May 2021. Data completeness in June and July 21 however, exceeded 90%.

### Performance (2WW, urgent suspected cancer, all pathway ends):

- Since Feb 21, Peninsula's performance has consistently exceeded 75%. In the last six months, Northern Devon's performance has declined and as of July 2021 (59.8%) was notably below 75% and the England average (73.5%).
- Peninsula's performance at tumour site level was <75% for the following tumour sites: Lower GI – 52.0%; Sarcoma – 52.1%; Haematological – 52.7%; Urological – 63.3% and Gynaecological – 68.9%. All trusts were <61% for suspected lower GI cancer (lowest performance at Torbay (36.4%) and Northern Devon (40.8%). Northern Devon was notably lower than other providers for skin (52.8%), lung (61.5%) and breast (67.8%) for example.

## Diagnostic waits (not cancer-specific) (Feb to July 21)

- Peninsula overall: As of July 2021 the % of patients waiting 6+ weeks in descending order were as follows: Flexi sig (42.2%), Cystoscopy (41.3%), Colonoscopy (37.0%), MRI (34.5%), Ultrasound (28.1%), CT (28.1%) and Gastroscopy (21.5%).
- Northern Devon: For the majority of tests, generally had one of the highest % of patients waiting 6+ weeks. Notably higher % for ultrasound (July - 74.8%). Comparing July 21 to Feb 21, performance had improved for gastroscopies and cystoscopies, but notably declined for MRI and ultrasound.
- Royal Cornwall: For the majority of test types, had one of the lowest % of patients waiting 6+ weeks. As of July 21, performance had declined in a few areas compared to previous months: ultrasound (14.8%), CT (9%) and MRI (14.9%).
- Royal Devon & Exeter: Consistently highest % of patients waiting 6+ weeks for CT (~40-50%). As of July 21, performance had declined for cystoscopy compared to earlier months, and performance had declined for a number of tests compared to June 21.
- Torbay & South Devon: Consistently had one of the highest % of patients waiting 6+ weeks for colonoscopy and flexi sig from Feb to July 21.
- Plymouth: For several tests, had one of the lowest % of patients waiting 6+ weeks. As of July 2021, cystoscopy (54.7% - highest of all Peninsula trusts), MRI (43.8%) and CT (26.1%) had a notably higher proportion of patients waiting compared to other test types at the trust.

# National cancer programme information: Cancer Recovery and Performance Dashboard - By Provider



		Recovery					Cancer Waiting Times Performance			
		1a. Levels of Urgent Suspected Cancer Referrals seen (Latest month)	1b. Levels of Urgent Suspected Cancer Referrals seen (Cumulative – Mar 2020 to latest month)	2a. Levels of First Treatments for Cancer (Latest month)	2b. Levels of First Treatments for Cancer (Cumulative – March 2020 to latest month)	3. Proportion of Urgent GP Cancer PTL waiting >62 days	4. 2 week wait Urgent Suspected Cancer Performance	5. Faster Diagnosis Standard Performance	6. 31 day First Treatment Performance	7. 62 day Urgent Referral to 1 <sup>st</sup> Treatment Performance
		G ≥ 110% A 100-110% R < 100%	N/A	G ≥ 110% A 100-110% R < 100%	N/A	G ≤ 7.0% A-7.0%-8.8% R > 8.8%	G ≥ 93% A – 89.5-93% R < 89.5%	G ≥ 75% A - 70%-75% R < 70%	G ≥ 96% A – 94-96% R < 94%	G ≥ 85% A - 77.5%-85% R < 77.5%
		July 2021	Mar 20- July 21	July 2021	Mar 20- July 21	w/e 19 <sup>th</sup> Sept 21	July 2021	July 2021	July 2021	July 2021
Cornwall & Isles of Scilly	Royal Cornwall Hospitals	116.0%	92.3%	93.5%	91.8%	5.4%	96.6%	86.0%	97.0%	89.5%
Devon	Northern Devon Healthcare	101.3%	85.6%	85.0%	92.1%	11.0%	80.4%	62.1%	96.0%	75.2%
	Royal Devon and Exeter	114.5%	91.4%	66.7%	78.9%	7.9%	76.5%	81.9%	94.0%	64.0%
	Torbay and South Devon	96.1%	93.8%	104.5%	85.8%	8.0%	71.3% (2WW pilot trust)	76.4%	97.5%	67.8%
	University Hospitals Plymouth	106.5%	94.0%	85.6%	94.5%	14.1%	90.9%	77.0%	97.3%	70.6%
	England average	105.6%	91.8%	100.2%	92.1%	10.0%	85.6%	73.9%	94.7%	72.1%

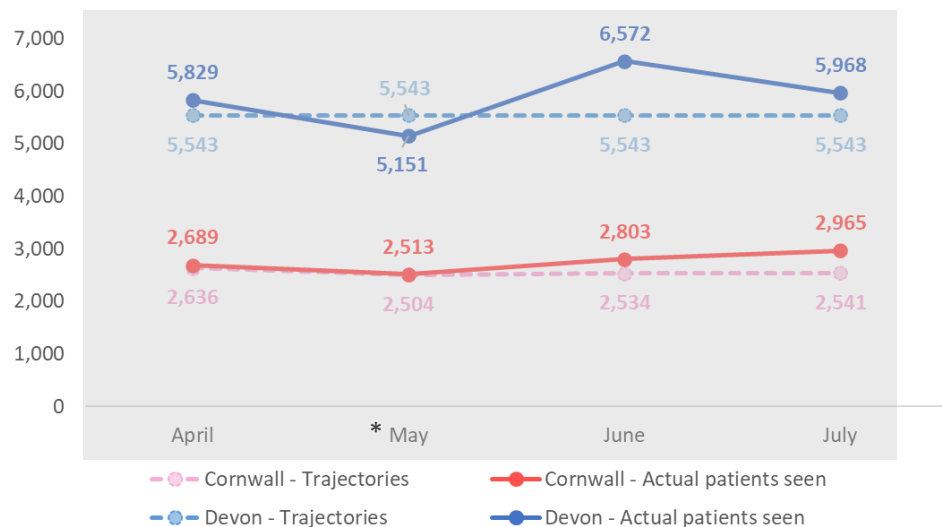
PTL RAG rating based on 7.0% -estimated level pre-pandemic level, and 8.8% being 25% higher than this level

**For NHS Internal use only to inform service improvement discussions**

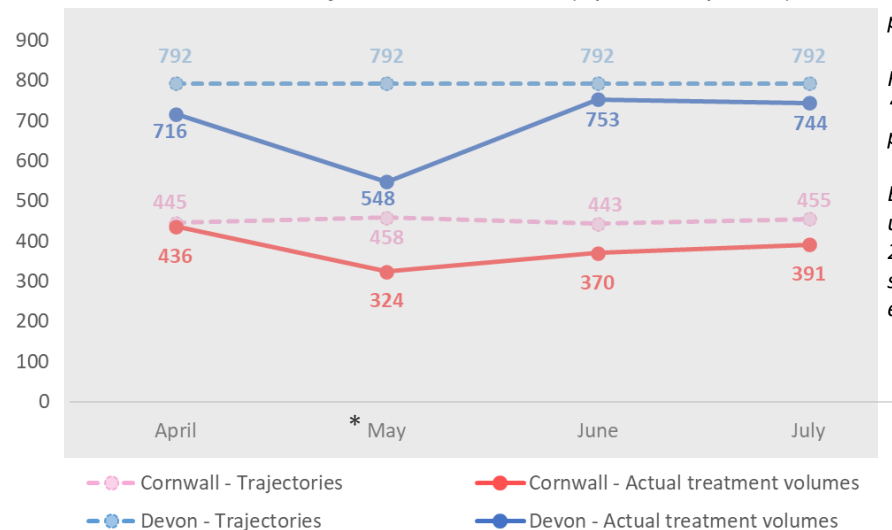


# H1 Planning trajectories vs. actual figures at CCG level

Referrals - Trajectories vs. actuals (April to July 2021)



Treatment - Trajectories vs. actuals (April to July 2021)



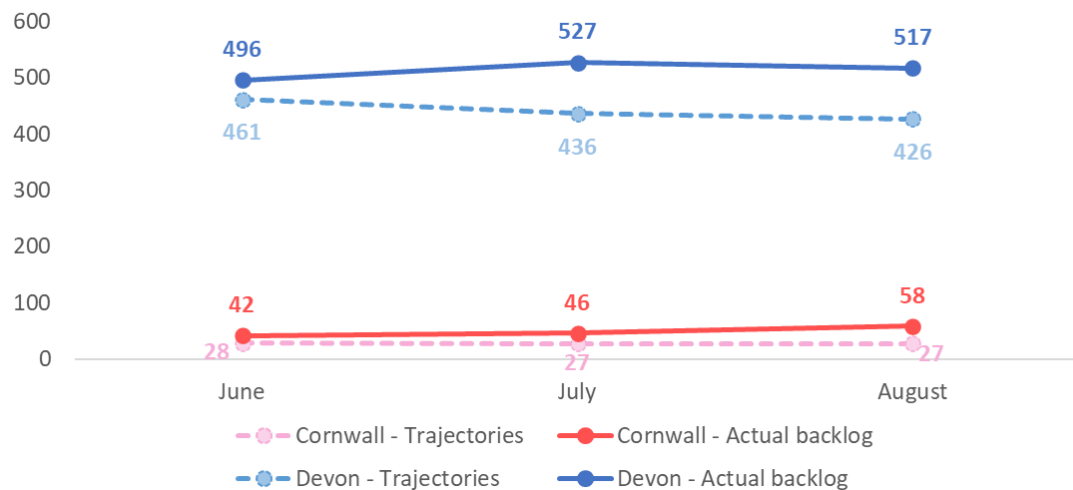
**For info:**

Trajectories are from ICS activity & performance final planning submissions for H1

Referrals + Treatment volumes (31-day) 'actual' figures are from monthly CWT (data is provisional) – see note at bottom of slide.

Backlog 'Actual' figures = last full week of unvalidated PTL data from June onwards (w/e 27<sup>th</sup> June, w/e 25<sup>th</sup> July, w/e 29<sup>th</sup> Aug) – urgent suspected cancer patients waiting 62+ days excluding non-site specific symptoms.

Backlog - Trajectories vs. actuals (June to August 2021)



**Referrals:**

- Cornwall CCG - no. of patients seen was generally similar to or above planning trajectories.
- Devon CCG - with the exception of May 2021 (where there are known data quality issues), no. of patients seen was higher than planning trajectories.

**Treatment:**

- For both CCGs, actual treatment volumes were consistently lower than planning trajectories.

**Backlog:**

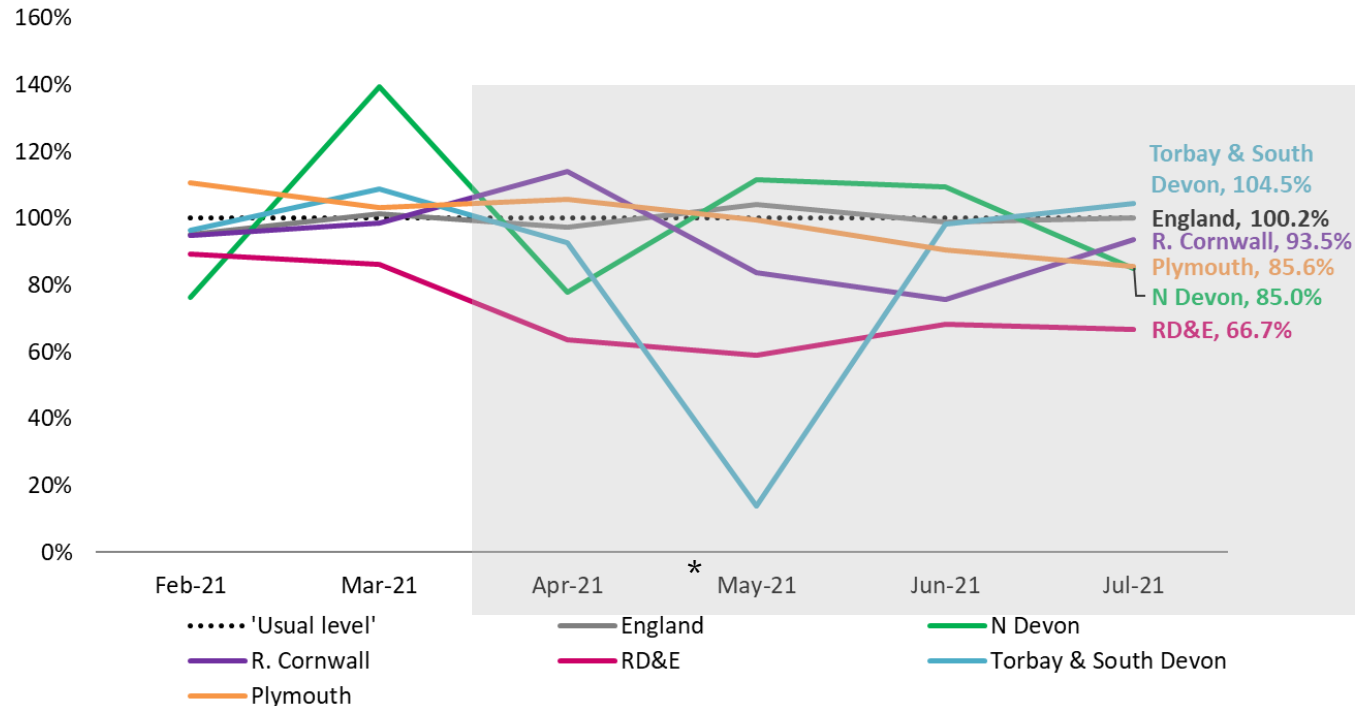
- For both CCGs, 62+ day backlog has been consistently higher than planning trajectories.

\*Please note: Referrals and treatment CWT Data from April to July 2021 is provisional and subject to change, with known data quality issues for several trusts in Devon CCG in May 2021.

# Treatment volumes

## % of 'usual treatment levels' by provider

Patients receiving first definitive treatment for cancer within 31- days - % of usual levels (All)

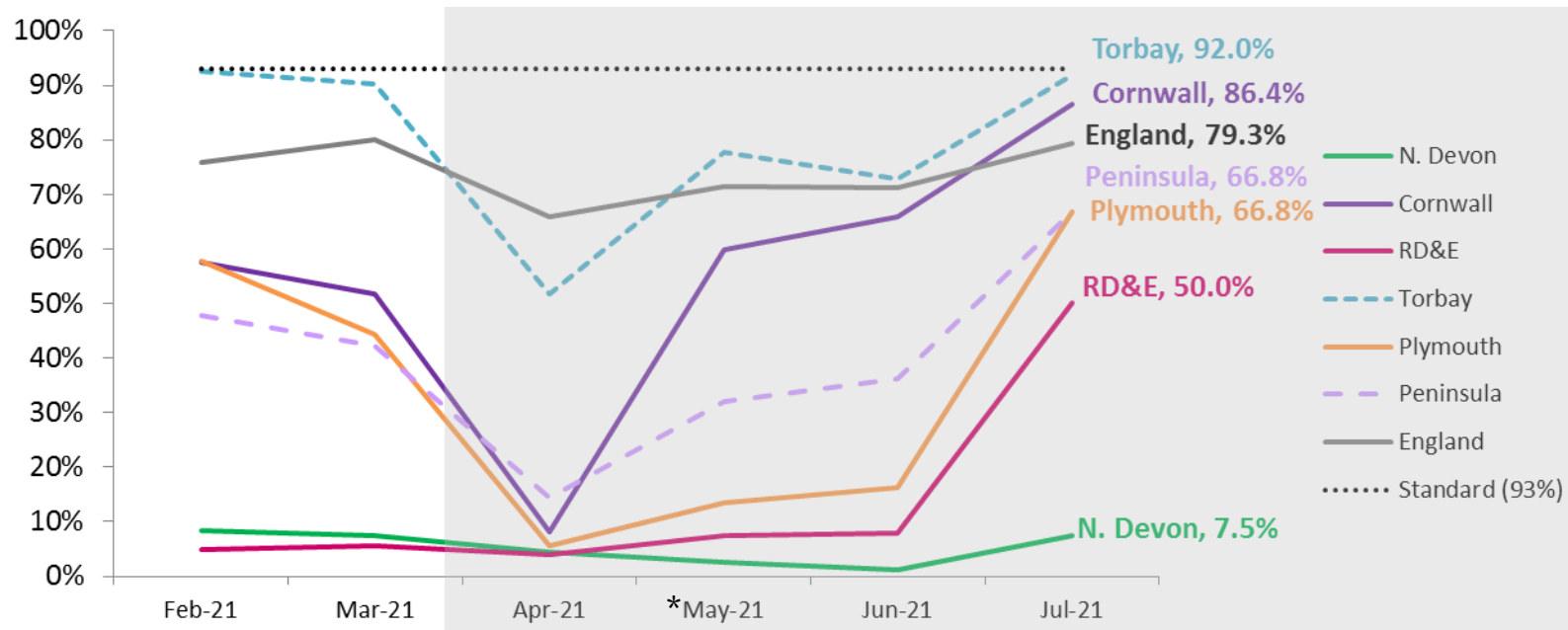


- 'Usual' level =
  - Comparing individual month to the same month from period March 2019 to February 2020 e.g. Feb 2021 activity is compared to Feb 2020 activity, whilst July 2021 activity is compared to July 2019, with working days adjusted.
  - **IMPORTANT NOTE: 100% would mean activity levels were the same as comparative months in 2019/20, therefore this does not account for treatment shortfall as a result of the Covid-19 pandemic or expected yearly growth**
- **Northern Devon's** treatment volumes compared to 'usual' levels have fluctuated and were 85.0% as of July 2021.
- **Royal Cornwall's** treatment volumes compared to 'usual' levels have fluctuated and were 93.5% as of July 2021.
- **Royal Devon & Exeter's** treatment volumes compared to 'usual' levels have been consistently notably lower and were 66.7% as of July 2021
- **Torbay & South Devon's** treatment volumes compared to 'usual' levels have fluctuated and were 104.5% as of July 2021. (There was a notable dip in May 2021 however there are known data quality issues for the trust in this month)
- **Plymouth's** treatment volumes compared to 'usual' levels have fallen in recent months and were 85.6% as of July 2021.

\*Please note: Data from April to July 2021 is provisional and subject to change, with known data quality issues for CWT treatment volumes at several trusts (most notably Torbay & South Devon, and Royal Devon & Exeter - Skin) in May 2021.

# 2WW performance – Suspected breast cancer + breast symptomatic pathway

**Two week waits: Urgent suspected breast cancer + breast symptomatic performance**



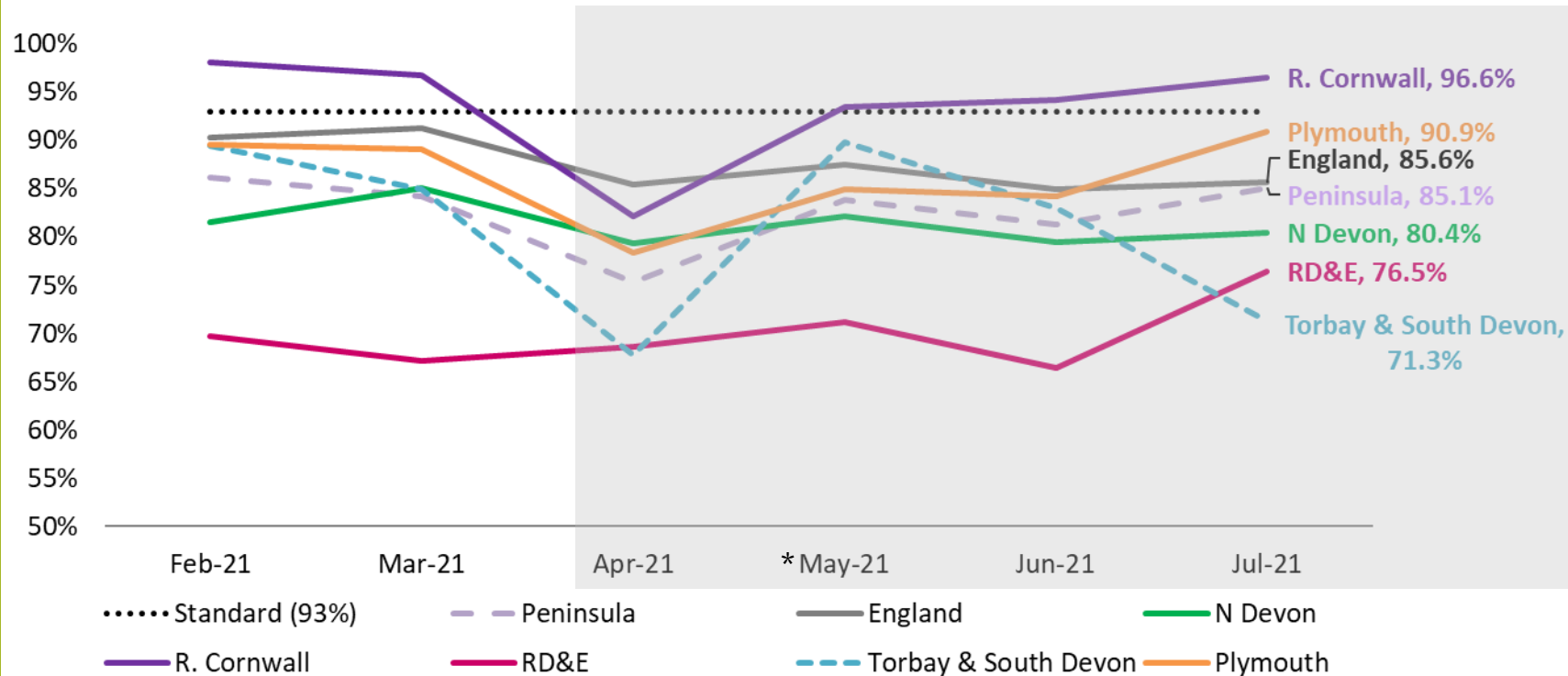
- **Please note:** This slide shows the proportion of urgent suspected breast cancer and breast symptomatic patients seen within 14 days. **Breast symptomatic = patients referred with breast symptoms where cancer is not initially suspected**
- **Peninsula's** performance declined from Feb to April 2021 but has since improved. As of July 2021, performance was 66.8% (notably below the England average, 79.3% and the individual 93% standards for urgent suspected cancer and breast symptomatic referrals).
- **Northern Devon:** consistently very low performance, and improvement was not as notable in July 2021 compared to other trusts (7.5%).
- **Please note** **Torbay & South Devon** is part of the 2WW pilot. Performance figures have been included here for information only.

Please note: Overall Peninsula figures are CCG based.

\*Data for April, May, June and July 2021 is provisional and subject to change. There are known data quality issues in CWT data for May 2021, most notably Torbay & South Devon. Referral activity in several months for some trusts was notably less than working day adjusted July 2019 levels (does not account for expected yearly growth/additional referrals required due to Covid-19 pandemic)

# 2WW performance – Overall urgent suspected cancer pathway

## Two week waits: Urgent suspected cancer performance (All)



- Since Feb 21, **Peninsula's** performance has been consistently below the 93% standard and England average (ranging between 75.3% and 86.2%)
- **Royal Devon & Exeter** was generally the lowest performing trust in the alliance (excluding Torbay & South Devon which is part of the 2WW pilot). As of July 2021 performance improved (76.5%) but remained notably lower than both the standard and England average (85.6%)
- With the exception of April 2021, **Royal Cornwall** met or exceeded the 93% standard.
- Please note **Torbay & South Devon** is part of the 2WW pilot. Performance figures have been included here for information only. **Torbay & South Devon's** performance was the lowest of the Peninsula trusts in July 2021 (71.3%).

Please note: Overall Peninsula figures are CCG based.

\*Data for April, May, June and July 2021 is provisional and subject to change. There are known data quality issues in CWT data for May 2021, most notably Torbay & South Devon. Referral activity in some months/trusts was notably less than working day adjusted July 2019 levels (does not account for expected yearly growth/additional referrals required due to Covid-19 pandemic)



# 2WW performance – urgent suspected cancer pathway, tumour site level – July 2021

Does not meet 93% standard

Meets or exceeds 93% standard

	Northern Devon	Royal Cornwall	Royal Devon & Exeter	Torbay & South Devon	University Plymouth	Peninsula (provider level)
Suspected breast cancer	7.3%	99.2%	51.3%	92.2%	71.1%	69.5%
Suspected lower gastrointestinal cancer	95.8%	99.7%	49.5%	50.6%	99.5%	76.6%
Suspected other cancer	100.0%	75.4%	NA	NA	92.3%	78.9%
Suspected sarcoma	NA	100.0%	72.0%	NA	100.0%	82.1%
Suspected urological malignancies (excluding testicular)	98.1%	95.7%	87.4%	59.6%	90.7%	87.1%
Suspected brain/central nervous system tumours	100.0%	100.0%	79.2%	NA	93.0%	88.7%
Suspected head & neck cancer	94.1%	96.2%	85.5%	77.3%	92.0%	89.0%
Suspected upper gastrointestinal cancer	90.3%	98.5%	73.4%	89.9%	93.8%	89.0%
Suspected gynaecological cancer	93.8%	91.4%	86.0%	80.2%	95.5%	89.4%
Suspected skin cancer	99.1%	97.1%	91.9%	62.5%	92.0%	90.3%
Suspected haematological malignancies (excluding acute leukaemia)	80.0%	95.5%	76.9%	100.0%	100.0%	91.2%
Suspected lung cancer	100.0%	100.0%	96.2%	84.6%	96.8%	96.1%
Suspected testicular cancer	100.0%	100.0%	80.0%	100.0%	100.0%	96.2%
Suspected children's cancer	NA	100.0%	100.0%	NA	100.0%	100.0%
<b>ALL SUSPECTED TUMOUR SITES</b>	<b>80.4%</b>	<b>96.6%</b>	<b>76.5%</b>	<b>71.3%</b>	<b>90.9%</b>	<b>85.1%</b>

**\*Data caveat:** Activity figures at trust level for several tumour sites are small. Therefore, the confidence intervals for these percentages will be large i.e. a small difference in the number of patients seen within two weeks, could make a considerable difference in the percentage of patients meeting the standard. Figures in italics reflect <25 patients, figures in bold reflect >= 25 patients.

**Please note:** Peninsula's 2WW performance in this slide is based on aggregated provider level, including Torbay (previous slide for Peninsula for all tumour sites = CCG based).

**\*Data for July 2021 is provisional and subject to change. Referral activity in several trusts/tumour sites was notably less than working day adjusted July 2019 levels (does not account for expected yearly growth/additional referrals required due to Covid-19 pandemic)**

Overall provider level performance within Peninsula was lowest for breast (69.5%) followed by lower GI (76.6%) and other cancer (78.9%).

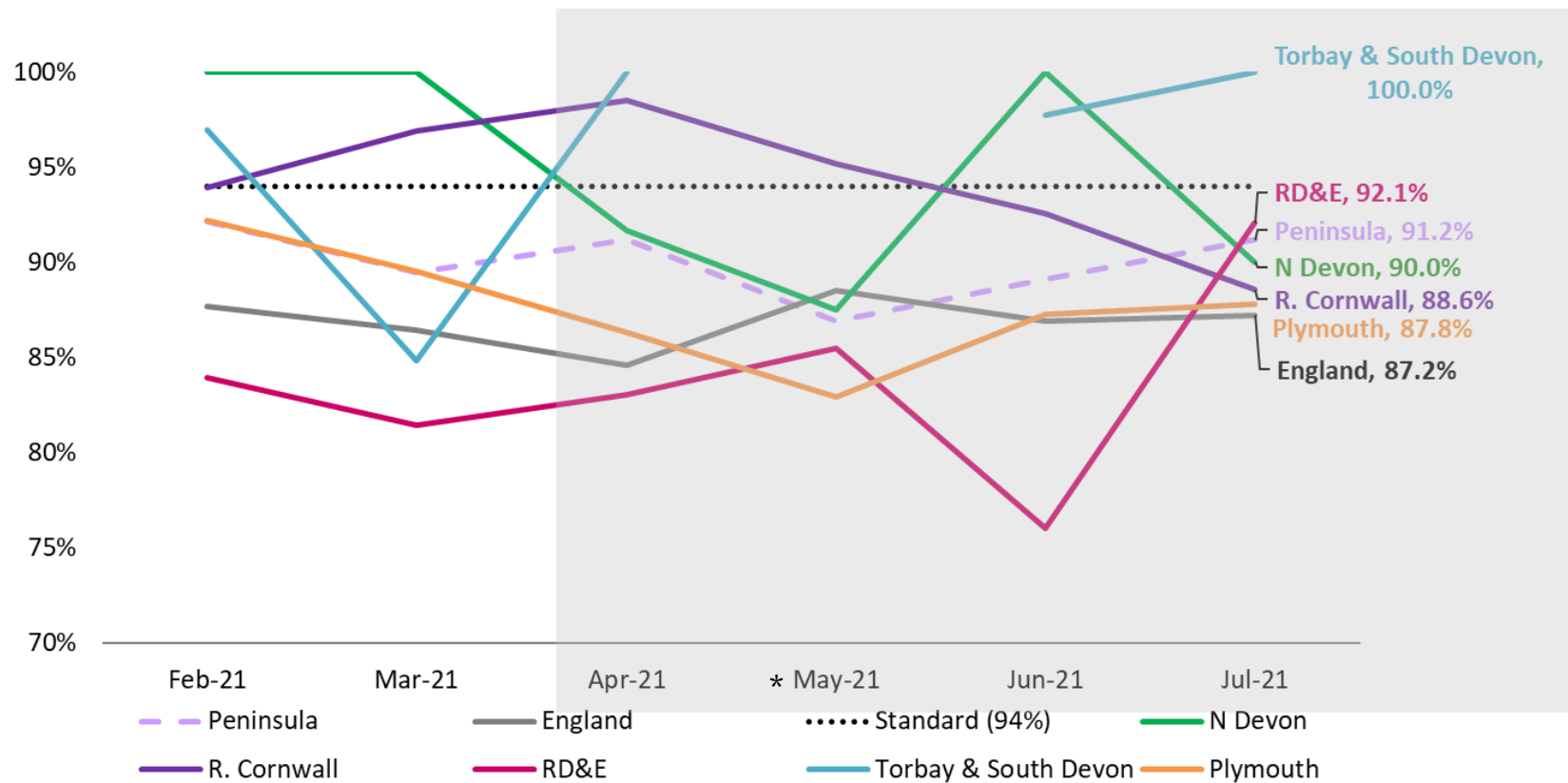
Please note, activity figures at trust level for several tumour sites are small –\*see data caveat below, figures in italics reflect <25 patients, figures in bold reflect >= 25 patients.

Lowest performance (<85%) at each provider (*excluding tumour groups with total patients <=25*):

- **Northern Devon:**
  - Breast (7.3%)
- **Royal Cornwall:** *Met the standard for all sites with the exception of other & gynae.*
  - Other (75.4%)
- **Royal Devon & Exeter:** *Met the standard for lung & children's cancer, only.*
  - Lower GI (49.5%), Breast (51.3%), Sarcoma (72.0%), Upper GI (73.4%)
- **Torbay & South Devon is part of the 2WW pilot. Performance figures have been included here for information only.**
  - Lower GI (50.6%), urological (59.6%), skin (62.5%), H&N (77.3%), gynae (80.2%), lung (84.6%)
- **Plymouth:**
  - Breast (71.1%)

# 31-day wait performance for second or subsequent treatment – surgery only

31-day wait for second or subsequent treatment: surgery (All)



- Since Feb 2021, **Peninsula's** performance overall has been below 94% and performance at the trusts has fluctuated, with no trust consistently meeting the 94% standard.
- **Royal Devon & Exeter** and **Plymouth** have been consistently below the 94% standard.
- As of July 2021, performance was lowest at **Plymouth** (87.8%), similar to the England average (87.2%).
- **\*Data caveat:** Activity figures at **Northern Devon** are small (<20). Therefore, the confidence intervals for these percentages will be large i.e. a small difference in the number of patients waiting 31 days for second or subsequent treatment (surgery), could make a considerable difference in the percentage of patients meeting the standard.

Please note: Overall Peninsula figures are **CCG based**.

**\*Data for April, May, June and July 2021 is provisional and subject to change. There are known data quality issues in CWT data for May 2021, most notably Torbay & South Devon.**

# 31-day wait performance for second or subsequent treatment – surgery only: tumour site level – July 2021

Does not meet 94% standard

Meets or exceeds 94% standard

	Northern Devon	Royal Cornwall	Royal Devon & Exeter	Torbay & South Devon	University Plymouth	Peninsula (CCG based)
Brain/central nervous system	NA	NA	NA	NA	0.0%	66.7%
Breast	NA	80.0%	100.0%	100.0%	78.6%	89.2%
Children's	NA	NA	NA	NA	NA	NA
Gynaecological	NA	100.0%	66.7%	100.0%	100.0%	93.3%
Haematological	NA	NA	100.0%	NA	NA	100.0%
Head & neck	NA	100.0%	100.0%	NA	100.0%	100.0%
Lower gastrointestinal	100.0%	100.0%	0.0%	100.0%	90.0%	92.0%
Lung	NA	NA	NA	NA	NA	NA
Other	NA	NA	100.0%	NA	100.0%	100.0%
Sarcoma	NA	100.0%	NA	NA	100.0%	100.0%
Skin	80.0%	90.5%	<b>93.1%</b>	100.0%	91.7%	93.3%
Testicular	NA	NA	NA	NA	NA	NA
Upper gastrointestinal	NA	100.0%	NA	100.0%	84.2%	88.0%
Urological	100.0%	77.8%	87.5%	100.0%	87.5%	86.2%
<b>All</b>	90.0%	88.6%	92.1%	100.0%	87.8%	91.2%

- \*Data caveat:** The vast majority of activity figures at trust level are less than <25 and a notable proportion < 7. Therefore, the confidence intervals for these percentages will be large i.e. a small difference in the number of patients waiting 31 days for second or subsequent treatment (surgery), could make a considerable difference in the percentage of patients meeting the standard.

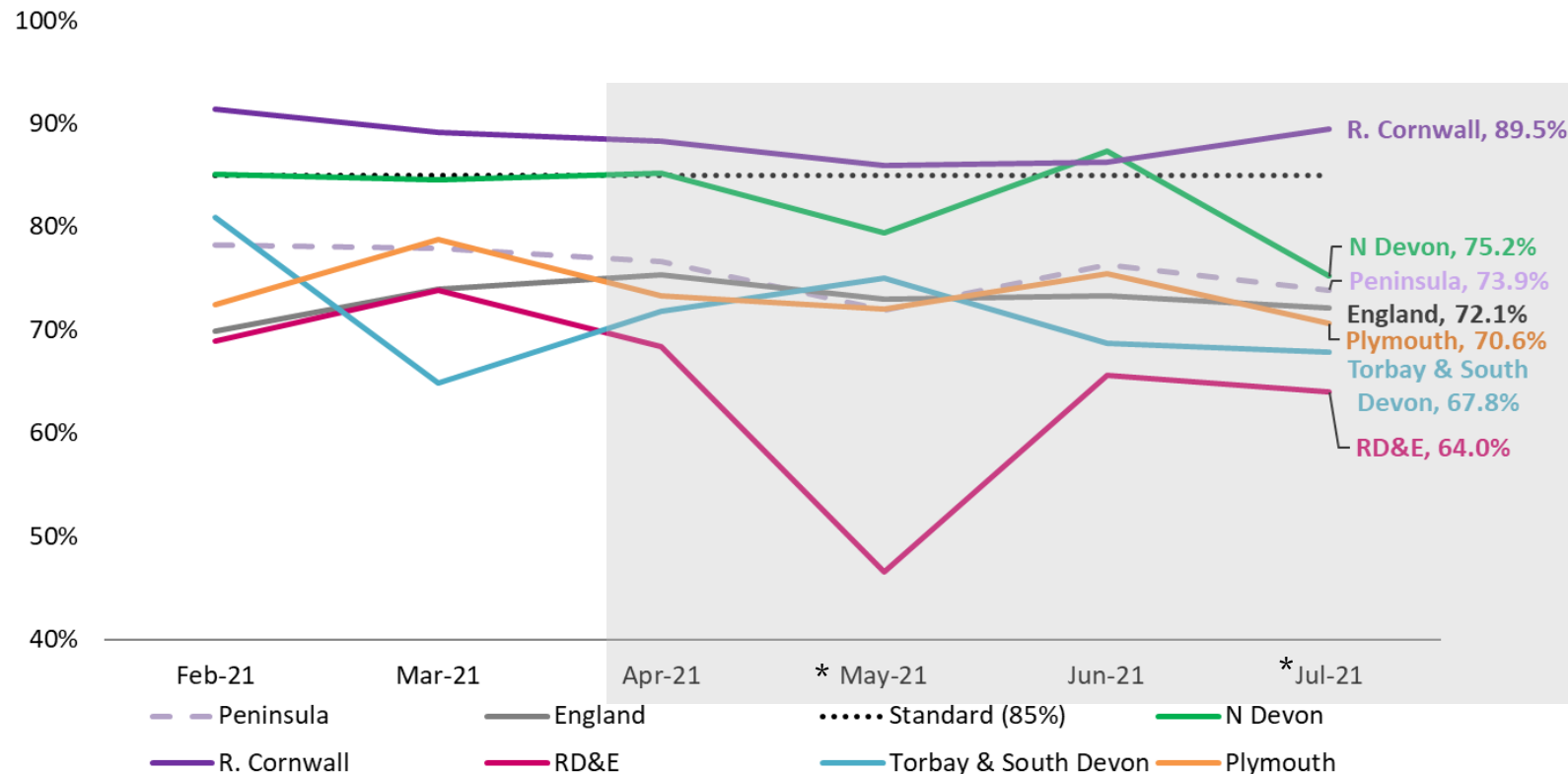
Figures in italics reflect <25 patients, figures in bold reflect >= 25 patients.

Please note: Overall Peninsula figures are CCG based.

Data for July 2021 is provisional and subject to change.

# 62-day wait performance: urgent GP referral to treatment

62-day waits: urgent suspected cancer performance (All)



- Since Feb 21, **Peninsula's** performance (driven predominantly by **Plymouth**, **Torbay & South Devon** and **Royal Devon & Exeter**) has been consistently below the 85% standard.
- In the most recent month, July 21, performance was below the England average (72.1%) at **Plymouth** (70.6%), **Torbay & South Devon** (67.8%) and **Royal Devon & Exeter** (64.0%).
- **Royal Cornwall** has consistently exceeded the 85% standard. **Northern Devon** met the standard in June 21 but saw a decline in July 21 to 75.2%.

**Please note:** Overall Peninsula performance is based on CCG level data.

**\*Data for April, May, June and July 2021 is provisional and subject to change. There are known data quality issues in CWT data for May 2021, most notably Torbay & South Devon and Royal Devon & Exeter - skin, and in July 2021 for Northern Devon.**

# 62-day wait performance: tumour site level – July 2021

	Does not meet PCA standard	Northern Devon	Royal Cornwall	Royal Devon & Exeter	Torbay	University Plymouth	Peninsula (provider level)	PCA Standard
	Meets or exceeds PCA standard							
Urological (Exc. Testicular)		63.2%	81.5%	44.9%	<b>24.0%</b>	<b>49.2%</b>	<b>47.6%</b>	75%
Lower Gastrointestinal		33.3%	82.4%	27.3%	42.9%	35.7%	<b>48.3%</b>	75%
Upper Gastrointestinal		50.0%	50.0%	57.1%	100.0%	50.0%	58.3%	85%
Gynaecological		100.0%	100.0%	62.5%	50.0%	42.9%	<b>67.9%</b>	85%
Breast		66.7%	73.7%	71.4%	76.5%	<b>60.0%</b>	<b>69.4%</b>	95%
Haematological (Exc. Acute Leukaemia)		NA	75.0%	71.4%	77.8%	57.1%	<b>70.4%</b>	75%
Lung		0.0%	80.0%	61.5%	66.7%	78.9%	<b>73.0%</b>	75%
Sarcoma		NA	66.7%	80.0%	NA	66.7%	73.7%	75%
Head & Neck		NA	100.0%	61.5%	75.0%	78.9%	<b>79.2%</b>	75%
Skin		96.4%	100.0%	93.5%	<b>92.3%</b>	<b>96.6%</b>	<b>96.7%</b>	95%
Other		NA	100.0%	100.0%	NA	100.0%	100.0%	85%
Testicular		100.0%	100.0%	100.0%	100.0%	100.0%	100.0%	
<b>All tumour sites</b>		<b>75.2%</b>	<b>89.5%</b>	<b>64.0%</b>	<b>67.8%</b>	<b>70.6%</b>	<b>73.9%</b>	<b>85.0%</b>

- This slide looks at 62-day performance by trust and tumour site in relation to Peninsula CA specific standards which have previously been developed by the alliance (see table - PCA standards which are highlighted in blue are different to the 85% operational standard)
- Please note, activity figures at trust level for several tumour sites are small (\*see data caveat below, figures in italics reflect <25 patients, figures in bold reflect >= 25 patients).
- Overall in Peninsula, the majority of PCA standards were not met. Tumour sites where the majority or all trusts were below the PCA standard included urological, lower GI, upper GI and breast. Performance overall was less than 50% for urological and lower GI.
- Urological** : PCA standard = 75%, all trusts (except **Royal Cornwall**) were below this. **Torbay & South Devon (24.0%)** had the lowest performance.
- Lower GI (48.3%)**: PCA standard = 75%, all trusts (except **Royal Cornwall**) were below this. **Royal Devon & Exeter (27.3%)** had the lowest performance.

**\*Data caveat:** Activity figures at trust level for several tumour sites are small. Therefore, the confidence intervals for these percentages will be large i.e. a small difference in the number of patients treated within 62 days, could make a considerable difference in the percentage of patients meeting the standard. Figures in italics reflect <25 patients, figures in bold reflect >= 25 patients.

**Please note: Data for July 2021 is provisional and subject to change. Known data quality issues at Northern Devon.**

**Peninsula's 62 day performance in this slide is based on aggregated provider level data (previous slide for overall Peninsula for all tumour sites = CCG based).**

Within the publications of waiting times, 'rarer' cancers are defined as **testicular** cancer, acute leukaemia and children's cancers. Patients suspected of these cancers are treated under the rare cancer pathway (31 days from urgent referral for suspected cancer and the start of treatment). The national operational standard for this waiting time measure is 85%. Here rare cancers are assessed against 62 days to show the contribution they make to overall 62 day performance.

# FDS – data completeness

*(total urgent suspected cancer + breast symptomatic)*

Trust	May-21			Jun-21			Jul-21			Estimated completeness (2ww routes) - Over 3 months
	2ww	FDS	% completeness	2ww	FDS	% completeness	2ww	FDS	% completeness	
UNIVERSITY HOSPITALS PLYMOUTH NHS TRUST	2,474	2,215	89.5%	2,639	2,450	92.8%	2,532	2,412	95.3%	92.5%
ROYAL DEVON AND EXETER NHS FOUNDATION TRUST	2,043	1,850	90.6%	2,496	2,204	88.3%	2,192	2,087	95.2%	91.4%
ROYAL CORNWALL HOSPITALS NHS TRUST	1,954	1,843	94.3%	2,330	2,009	86.2%	2,458	2,152	87.6%	89.4%
NORTHERN DEVON HEALTHCARE NHS TRUST	659	587	89.1%	746	671	89.9%	735	607	82.6%	87.2%
TORBAY AND SOUTH DEVON NHS FOUNDATION TRUST	914	0	0.0%	1,710	1,561	91.3%	1,438	1,310	91.1%	60.8%

- From May to July 2021:
  - Plymouth and Royal Devon & Exeter on average had over 90% estimated data completeness
  - Royal Cornwall and Northern Devon were below 90% (89.4% and 87.2%, respectively)
  - Torbay and South Devon did not submit FDS data for May 2021. Data completeness in June and July 21 however, exceeded 90%.

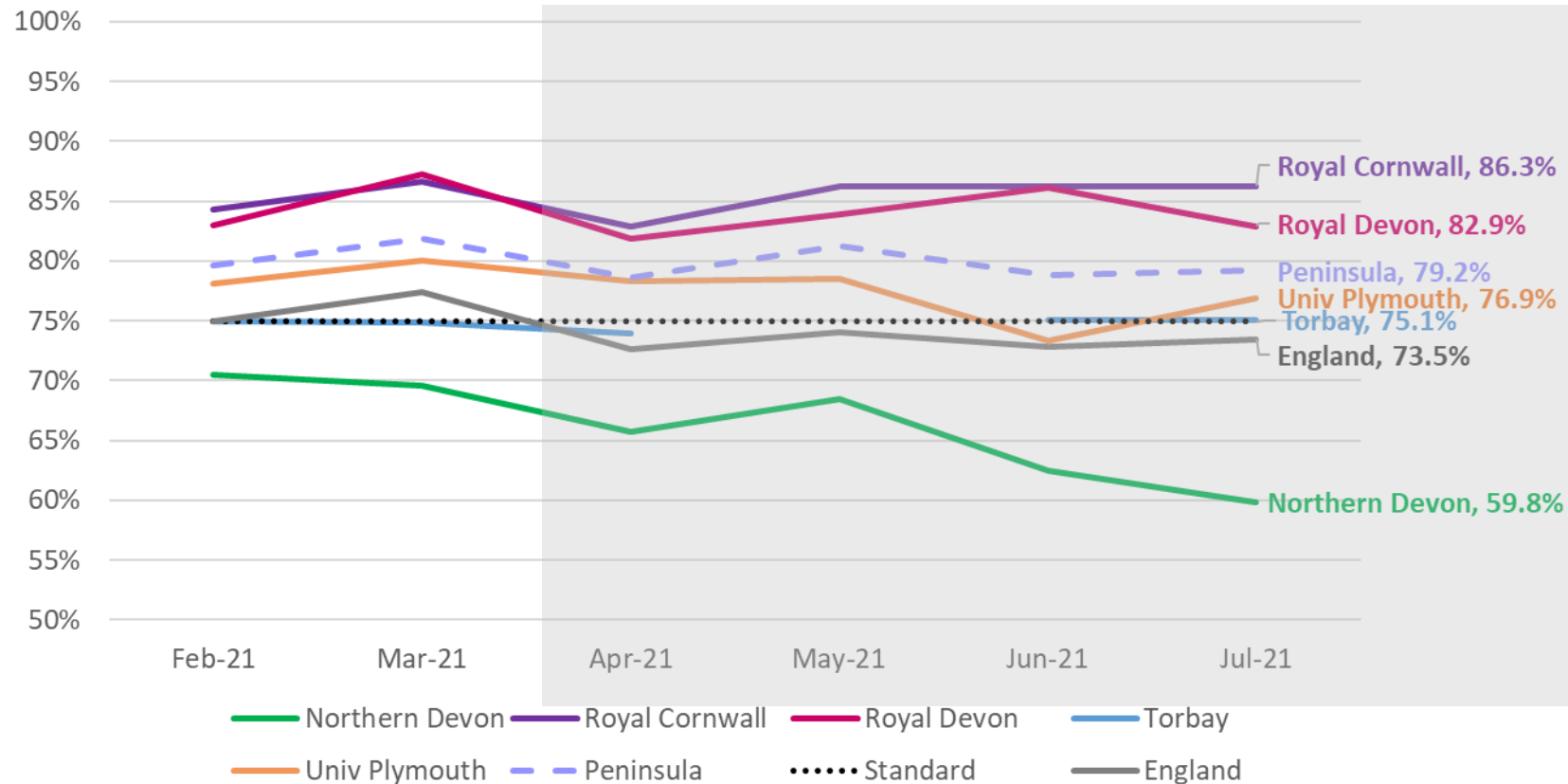
Source: [Faster Diagnosis Standard estimated data completeness July 2021 - Cancer Alliances Workspace - FutureNHS Collaboration Platform](#)

## Data completeness notes:

- **Data for May to July 2021 is provisional and subject to change. Torbay and South Devon did not submit FDS data for May 2021.**
- Comparison made between number of patients 1<sup>st</sup> seen following an urgent suspected cancer or breast symptomatic referral in the last 3 months (May – July 2021) and number of Faster Diagnosis Standard clock stops following an urgent suspected cancer or breast symptomatic route referral in the last 3 months (May – July 2021). Comparison used is average percentage across 3 months.
- Only includes providers who on average saw at least 20 patients following a 2WW referral (total urgent suspected cancer and breast symptomatic).
- RAG rating used: ≥90% - Green, 80-90% - Yellow, <80% Red.

# FDS Performance (2WW, urgent suspected cancer, all pathway end reasons)

FDS 2WW - All pathway end reasons: All suspected tumour sites

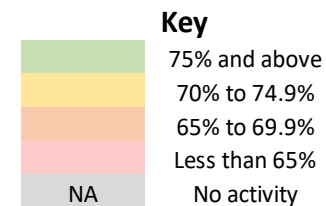


- \*Standard - Systems will be expected to meet the new Faster Diagnosis Standard (for all routes urgent suspected cancer, urgent breast symptomatic, and urgent screening referrals in aggregate) from Q3 2021/22, to be introduced initially at a level of 75%. This slide focuses on '2WW, urgent suspected cancer, all pathway ends' only.
- Since Feb 21, **Peninsula's** performance (including **Royal Cornwall** and **Royal Devon & Exeter**) has consistently exceeded 75%.
- In the last six months, **Northern Devon's** performance has declined and as of July 2021 (59.8%) was notably below 75% and the England average (73.5%).
- **Torbay & South Devon** did not submit data by the submission deadline for May 2021. In the remaining months performance has been similar to the 75% standard.
- With the exception of June 2021, **Plymouth's** performance has exceeded 75%.

**Please note:** Overall Peninsula performance is based on CCG level data.

Data for April, May, June and July 2021 is provisional and subject to change. Torbay & South Devon did not submit data for May 2021. FDS data for February and March 2021 was not published.

# FDS Performance (2WW, urgent suspected cancer, all pathway end reasons): Tumour site level – July 2021



	Northern Devon	Royal Cornwall	Royal Devon & Exeter	Torbay & South Devon	University Plymouth	Peninsula (CCG-based)
Suspected lower gastrointestinal cancer	40.8%	58.2%	60.6%	36.4%	53.6%	52.0%
Suspected sarcoma	0.0%	100.0%	37.4%	NA	89.7%	52.1%
Suspected haematological malignancies (excluding acute leukaemia)	60.0%	70.6%	46.2%	42.9%	35.7%	52.7%
Suspected urological malignancies (excluding testicular)	51.1%	74.1%	80.9%	44.2%	54.8%	63.3%
Suspected gynaecological cancer	67.9%	78.9%	61.6%	66.1%	72.3%	68.9%
Suspected upper gastrointestinal cancer	81.7%	82.0%	87.4%	82.2%	65.8%	76.3%
Suspected head & neck cancer	80.0%	90.2%	85.8%	86.2%	74.6%	83.3%
Suspected other cancer	NA	89.1%	NA	NA	81.3%	87.3%
Suspected skin cancer	52.8%	93.6%	97.6%	87.3%	84.0%	89.3%
Suspected lung cancer	61.5%	100.0%	100.0%	88.9%	89.4%	90.0%
Suspected testicular cancer	25.0%	90.9%	100.0%	85.7%	100.0%	90.4%
Suspected breast cancer	67.8%	98.0%	93.8%	98.1%	87.9%	91.3%
Suspected brain/central nervous system tumours	100.0%	100.0%	85.7%	NA	96.6%	92.6%
Suspected acute leukaemia	NA	NA	NA	100.0%	NA	100.0%
Suspected children's cancer	NA	100.0%	100.0%	NA	100.0%	100.0%
<b>ALL TUMOUR SITES</b>	<b>59.8%</b>	<b>86.3%</b>	<b>82.9%</b>	<b>75.1%</b>	<b>76.9%</b>	<b>79.2%</b>

- Peninsula's performance at tumour site level was <75% for the following tumour sites:
  - Lower GI – 52.0%
  - Sarcoma – 52.1%
  - Haematological – 52.7%
  - Urological – 63.3%
  - Gynaecological – 68.9%
- All trusts were <61% for suspected lower GI cancer (lowest performance at **Torbay & South Devon** (36.4%) and **Northern Devon** (40.8%))
- All trusts were below 75% for a number of tumour sites, in particular **Northern Devon**. Northern Devon was also notably lower than other providers for skin (52.8%), lung (61.5%) and breast (67.8%) for example.
- **\*Data caveat:** Activity figures at trust level for several tumour sites small. Therefore, the confidence intervals for these percentages will be large i.e. a small difference in the number of patients meeting the 28 day FDS, could make a considerable difference in the percentage of patients meeting the standard. Figures in italics reflect <25 patients, figures in bold reflect >= 25 patients.

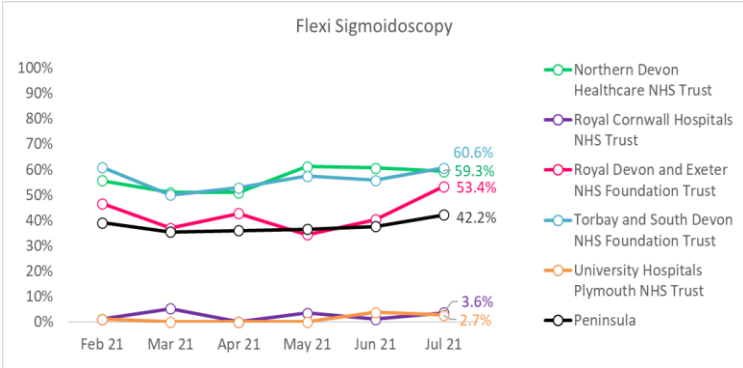
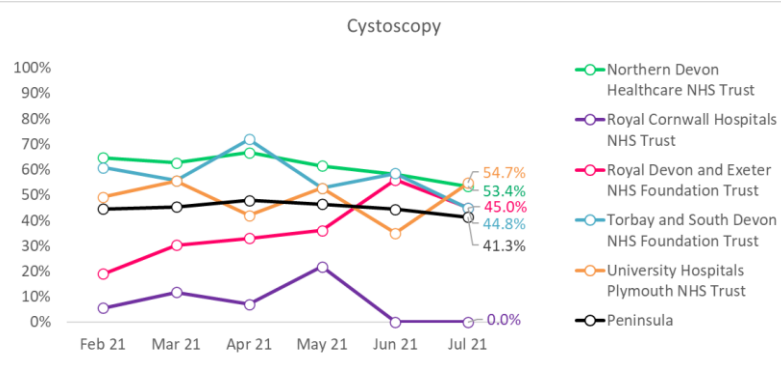
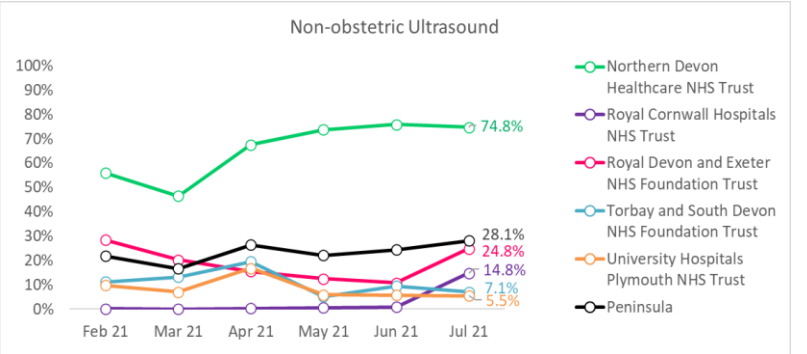
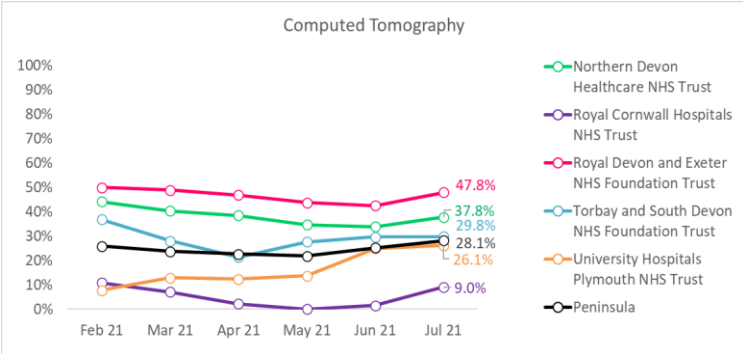
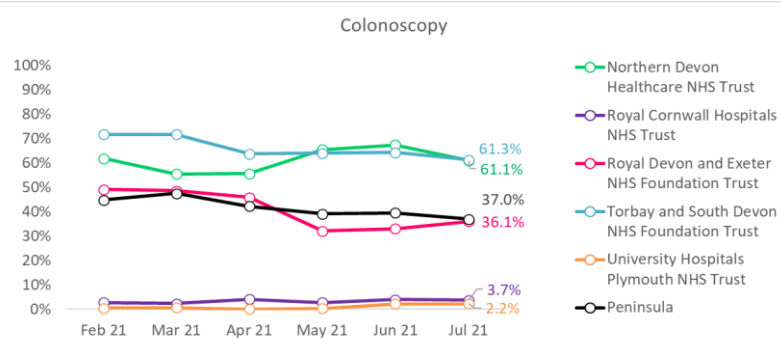
**Data for July 2021 is provisional and subject to change.**

**Please note:** Overall Peninsula performance is based on **CCG** level data.

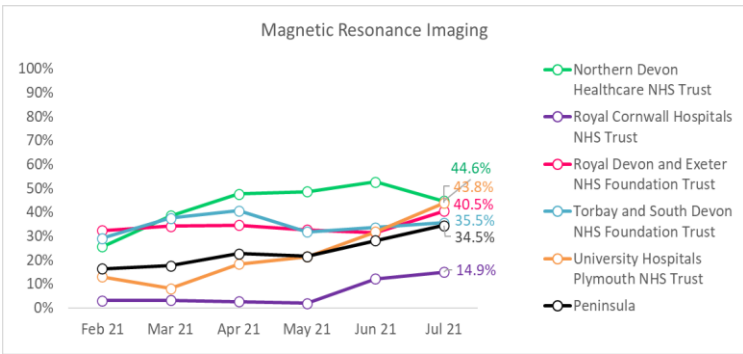
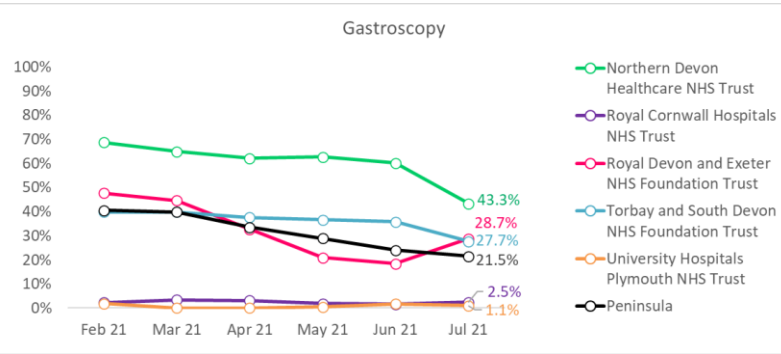
\*Standard - Systems will be expected to meet the new Faster Diagnosis Standard (for all routes urgent suspected cancer, urgent breast symptomatic, and urgent screening referrals in aggregate) from Q3 2021/22, to be introduced initially at a level of 75%. This slide focuses on '2WW, urgent suspected cancer, all pathway ends' only.



# Diagnostic waits (DM01) – % of patients waiting 6+ weeks (not cancer-specific)



- Peninsula:** As of July 2021, the % of patients waiting 6+ weeks in descending order were as follows: Flexi sig (42.2%), Cystoscopy (41.3%), Colonoscopy (37.0%), MRI (34.5%), Ultrasound (28.1%), CT (28.1%) and Gastroscopy (21.5%).
- Northern Devon:** For the majority of tests, generally had one of the highest % of patients waiting 6+ weeks. Notably higher % for ultrasound (July - 74.8%). Comparing July 21 to Feb 21, performance had improved for gastroscopies and cystoscopies, but notably declined for MRI and ultrasound.
- Royal Cornwall:** For the majority of test types, had one of the lowest % of patients waiting 6+ weeks. As of July 21, performance had declined in a few areas compared to previous months: ultrasound (14.8%), CT (9%) and MRI (14.9%).
- Royal Devon & Exeter:** Consistently highest % of patients waiting 6+ weeks for CT (~40-50%). As of July 21, performance had declined for cystoscopy compared to earlier months, and performance had declined for a number of other tests compared to June 21.
- Torbay & South Devon:** Consistently had one of the highest % of patients waiting 6+ weeks for colonoscopy and flexi sig from Feb to July 21.
- Plymouth:** For several tests, had one of the lowest % of patients waiting 6+ weeks. As of July 2021, cystoscopy (54.7% - highest of all Peninsula trusts), MRI (43.8%) and CT (26.1%) had a notably higher proportion of patients waiting compared to other test types at the trust.



**Please note:** This analysis is based on the % of all patients waiting more than 6 weeks for diagnostic tests and is not exclusive to cancer patients only

**Please note:** Peninsula performance is based on aggregated provider level data