

# **Urgent tests for a possible serious illness and what this means to you**

**Easy read patient information booklet**



# What is this service?



The cause of these symptoms can sometimes be unclear to your GP.



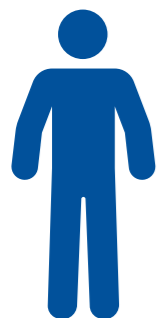
These symptoms may sometimes be caused by a serious disease such as cancer. But the risk of this is very low.



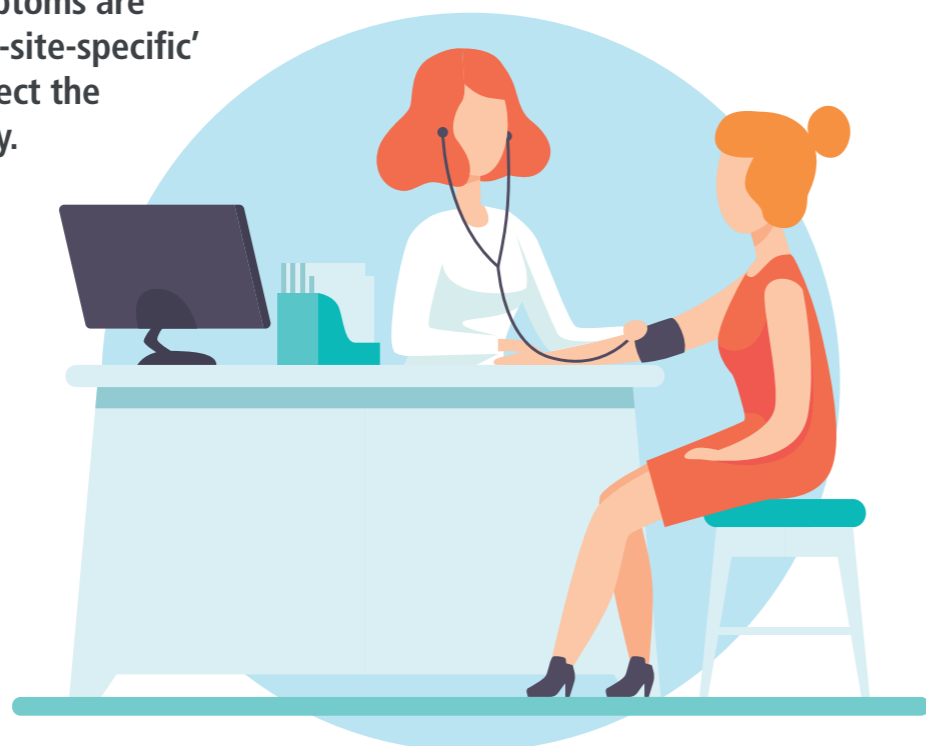
Further investigation will help to find out the cause of your symptoms.



Many patients visit their GP with symptoms that may include weight loss or tiredness.



These symptoms are called 'non-site-specific' as they affect the whole body.



# Your hospital appointment



Your GP will send your details to the hospital.



Sometimes this letter will include instructions to follow before you attend.



Your hospital will invite you to an appointment.



This will happen within two weeks of your GP's referral.



Please make sure you are available for this appointment.



# What is a CT Scan?



A CT scan uses X-rays and a computer.



It will usually focus on your neck, chest, stomach and pelvis.

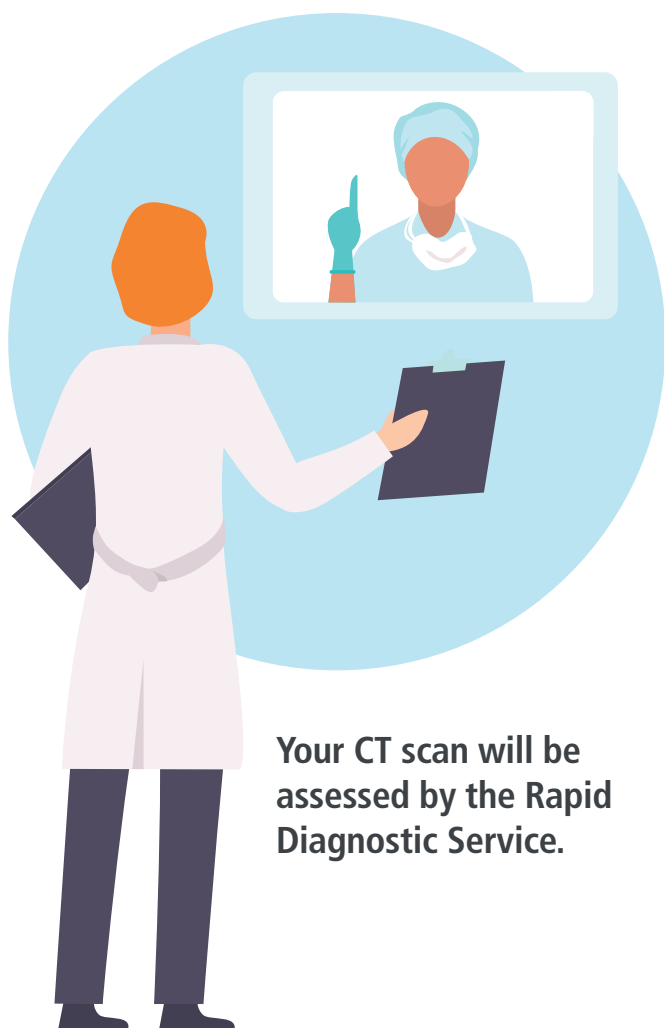


It is carried out by a radiographer.



The CT scan produces detailed images of the inside of your body.

# What happens next?



Your CT scan will be assessed by the Rapid Diagnostic Service.



If a serious medical condition such as cancer is found, then the Rapid Diagnosis Service will contact you.



You may be referred to a specialist.



If nothing serious is found, the service will tell you, and write to your GP with any information and treatment suggestions.



Find out more at the following websites:

[www.nhs.uk/conditions/cancer/](http://www.nhs.uk/conditions/cancer/)

[www.cancerresearchuk.org/cancer-symptoms/what-is-an-urgent-referral](http://www.cancerresearchuk.org/cancer-symptoms/what-is-an-urgent-referral)